

TANCO AUTOWRAP
200AL MODEL 1994

**OPERATORS HANDBOOK
AND
PARTS LIST
WD65-200-AL-M0194**

GUARANTEE

Subject as hereunder provided, the Sellers undertake to correct either by repair or at their election by replacement any defect of material or workmanship which occurs in any of its goods within twelve months after delivery of such goods to first user, with the exception of contractors or commercial users when warranty period is six months.

In respect of Autowraps the warranty period is for 12 months or 8000 bales whichever ever occurs first.

In respect of Aerways tine breakage will be assessed on an individual basis in every case.

The term goods when used in this document means the article or articles described in invoice as sold by the sellers but does not include equipment or proprietary parts or accessories not manufactured by the sellers. The sellers, however, undertake to pass on so far as they legally can to the first user the benefit of any warranty given to the Sellers by the suppliers of such equipment, parts or accessories.

This understanding shall not apply to:

- (a) Any goods which have been sold by the first user.
- (b) Any goods which have been injured by unfair wear and tear, neglect or improper use.
- (c) Any goods the identification marks of which have been altered or removed.
- (d) Any goods which have not received the basic normal maintenance such as tightening of bolts, nuts, tines, hose connections and fittings and normal lubrication with the recommended lubricant.
- (e) The use of any product on tractors exceeding the recommended horsepower.
- (f) Any goods which have been altered or repaired other than on instruction or with the written approval of the Seller or to which any part not manufactured or having written approval by the Sellers have been fixed.
- (g) Any second-hand goods or part thereof.

Any allegedly defective part or parts returned to the Sellers must be sent carriage paid. No claim for repair or replacement will be entertained unless upon discovery of the alleged defect written notification is sent to the Sellers giving, at the same time, the name of the Buyer from whom the goods were purchased and the date of purchase together with full details of the alleged defect and the circumstances involved, also the serial number of the machine etc.,

The Sellers shall be under no liability to their Buyers and first and subsequent users of their goods or to any other person or persons for loss or damages howsoever arising in respect of either personal injuries or for arising out of, or in any way connected with or arising from the manufacturers sale, handling, repair, maintenance, replacement or use of its goods or the failure or malfunction of any of its goods.

Representation and/or warranties made by any person (including Buyers and employees and other representatives of the Seller) which are inconsistent or conflicting with these conditions are not binding upon the Sellers unless given in writing and signed by a Director of the Sellers.

CLAIMS

If you wish to make a claim under guarantee.

1. Immediately, stop using the machine.
2. List the details of the machine and damaged item, (as shown inside the front cover of this booklet).
3. Consult with your Tanco dealer (supplier) and have him forward your claim and the damaged item to Tanco.

INDEX**200AL MODEL****PAGE NO.**

SAFETY INSTRUCTIONS	1/2
TECHNICAL SPECIFICATIONS	3
PRE DELIVERY INSTRUCTIONS	4/5/6
TRANSPORT INSTRUCTIONS	7
MACHINE IDENTIFICATION	7
PREPARATION OF A NEW MACHINE	8
HYDRAULIC CONNECTIONS	8
JUNCTION BOX & CONTROLLER FOR 3 BANK VALVE	9
AUTOMATIC BALE WRAP CONTROLLER	10
OPERATOR ACCESSIBLE MONITOR PROGRAMMES	11/12/13
MODE OF OPERATION	14
OPERATING INSTRUCTIONS	15
WARNING; LIFT ARM	16
FILM OVERLAP SYSTEM	17
SERVICE AND MAINTENANCE	18/19
FILM THREADING DIAGRAM	20
PRIMARY CHAIN DRIVE TENSIONING SYSTEM	21
DRIVE BELT TENSIONING SYSTEM	22
FILM ADAPTOR OPERATING INSTRUCTIONS	23
ELECTRICAL COMPONENTS ILLUSTRATED	24
PARTS LIST FOR ABOVE	24:1
HYDRAULIC CIRCUIT DIAGRAM 200 AL MODEL	25
HYDRAULIC COMPONENTS ILLUSTRATED 200 AL MODEL	26
PARTS LIST FOR ABOVE	26:1
FITTING 2 WAY SOLENOID VALVE	27
CONSTANT INDEXING DRIVE ASSY ILLUSTRATED	28
PARTS LIST FOR ABOVE	28:1
AUTOWRAP ILLUSTRATED (200AL MODEL)	29
PARTS LIST FOR ABOVE	29:1
AUTOWRAP ILLUSTRATED (200AL MODEL)	30
PARTS LIST FOR ABOVE	30:1
HYDRAULIC MOTOR DRIVE	31
PARTS LIST FOR ABOVE	31:1
LIFT ARM ASSEMBLY ILLUSTRATED (200AL MODEL)	32
PARTS LIST FOR ABOVE	32:1
FILM DISPENSING SYSTEM ILLUSTRATED (200AL MODEL)	33
PARTS LIST FOR ABOVE	33:1
VALVE/JUNCTION BOX/FILTER & DIVERTER VALVE MOUNTING BRACKET ASSEMBLY	34
PARTS LIST FOR ABOVE	34:1
FAULT FINDING SUMMARY	35/36
CUT AND START UNIT ILLUSTRATED	37
PARTS LIST FOR ABOVE	37:1
CUT AND START UNIT ILLUSTRATED	38
PARTS LIST FOR ABOVE	38:1
CUT AND START MOUNTING FRAME ILLUSTRATED	39
PARTS LIST FOR ABOVE	39:1
SLIP RING ASSY ILLUSTRATED	40
PARTS LIST FOR ABOVE	40:1
SENSOR MAGNET MOUNTING BRACKETS ILLUSTRATED	41
PARTS LIST FOR ABOVE	41:1
CUT AND START FAULT FINDING SUMMARY	42/43/44

GENERAL SAFETY INSTRUCTIONS.

Before operating, adjusting or servicing the machine it is important that these instructions are carefully read by those directly concerned.

Whilst every care has been taken in the design of this machine there remains a certain amount of risk to Personnel whilst the machine is in use. It is strongly recommended that the user/operator takes all possible precautions to ensure both his own safety and that of others while the Autowrap is operating. The area around the machine should be kept clear at all times and only the operator should be allowed near the machine when working.

The Autowrap is designed and sold for agricultural purposes and as such complies with the definition as laid down for an Agricultural Trailed Appliance.

Under this definition the machine is not fitted with brakes or lights. IT SHOULD NOT UNDER ANY CIRCUMSTANCES BE TOWED ON THE HIGHWAY AT SPEEDS IN EXCESS OF 20 m.p.h. (30 km/h).

If the machine is to be towed on the highway out of daylight hours then a suitable lighting board with indicators, stop lights and rear lights should be fixed to the rear of the machine before proceeding.

Bales should be loaded carefully on to the turntable and not dropped from a height.

Owners and operators are advised to contact their dealer regarding any field or service problems.

SPECIAL SAFETY INSTRUCTIONS

1. Stop engine of tractor before working on machine.
2. Put a suitable prop under raised platform before working in this area.
3. Always raise Lift Arm and fit safety prop before transporting machine on public roads.
4. Lift Arms should always be lowered before operating turntable.
5. Ensure platform rollers are parallel to Lift Arm before arm is raised.

OPERATING SAFETY INSTRUCTIONS

1. Operators should have their hands on the controls at all times when the machine is use.
2. Autowrap control unit and lever controls must remain in the tractor cab at all times. The operator must at no time leave the tractor cab when the machine is in motion.
3. Keep onlookers clear of machine at all times. Danger zone is 5 metres.
4. Beware of rotating turntable and all moving parts.
5. If not operated correctly the bale could fly off the turntable. The end support rollers must always be fitted. Do not exceed recommended turntable speed of 25 r.p.m. Mis-shapen bales combined with excessive turntable speeds can be dangerous.
6. Care must be taken when tipping bales from machine on sloping ground and during subsequent handling to ensure that they do not roll, thus causing hazard.

THINK OF YOUR PERSONAL SAFETY AND THAT OF OTHERS AT ALL TIMES.

TECHNICAL SPECIFICATIONS

200SL/200AL
Model
(3pt.Linkage)

Dimensions

Total Length - Exceeding Bale Mat	...	208cm
Width with arm raised	...	210cm
Height to top of side (bale guide) rollers	...	100cm
Height to top of side arm	...	210cm
Weight	...	900kgs
Speed of turntable	...	25 rev/min*
Oil requirement	...	23litres/min (165 kp cm2)
Attachment to tractor	...	Tr a c t o r Linkage
Bale sizes	...	120 x 120 cm up to 120 cm x 153 cm max 750 kgs
Film (Width of Roll)	...	500mm SL 750mm AL

* The speed of rotation can be varied to suit various conditions but on no account should it exceed 25 r.p.m. (Speeds in excess of 25 r.p.m. will void warranty).

PRE DELIVERY INSTRUCTIONS

IMPORTANT: DO NOT ATTEMPT TO OPERATE UNTIL THE FOLLOWING INSTRUCTIONS ARE PERFORMED OTHERWISE SERIOUS DAMAGE COULD BE CAUSED.

1. MACHINE ASSEMBLY

For ease of transportation some items are removed from their positions and stored elsewhere on the machine. The control box, film dispenser and cut and start unit are stored under the bale belt. Also stored under belt on remote control machines are the infra red receiver and sender units and warning beacon. The film mast is attached to the front of the machine. On round bale machines only, the top rollers c/w mounting brackets and the plastic end rollers are mounted on temporary brackets beside the bale belt, also the main guard may be dropped from its mounting position on the machine chassis. Road wheels, bale lift arm and bale ramp are transported separately. Remove the above items and assemble as detailed in parts list section of this manual taking particular note of the following points.

(i) DISPENSER MAST

Insert lift mast into socket towards front of machine. Ensure film pull down ram is faced towards the machine. Attach the pull down arm hydraulic ram. Attach the film dispenser to the mast ensuring that the end marked top is faced up. On remote control machines attach the infra-red receiver and warning beacon to top of mast. The film mast height is adjustable. Its height is dependant on bale size and type and is set in the field. It should be set so that centre line of film is in line with centre of bale. See Fig. 1

(ii) CUT & START

Attach Cut & Start unit to mounting frame on the left hand side of the machine. It is possible to move the unit along the mounting and fix it to any of three holes. On all round bale wrapping machines the unit is fixed to the centre hole on the mounting frame. Connect electrical supply to unit ensuring that wiring is secure. The cable is stored on the turntable frame near the Cut & Start mounting.

(iii) BALE LIFT ARM

Assemble bale lift arm and attach to mounting points on right hand side of main chassis. Attach hydraulic ram to lift arm; grease pivot pins.

(iv) TOP ROLLERS AND PLASTIC END ROLLERS

Place plastic end rollers in sockets on the back and front of the turntable. On round bale machines only, attach top rollers and mounting brackets to each side of the machine.

(v) MAIN GUARD (round bale machines only)

Bolt main guard onto its four mounting points.

(vi) ROAD WHEELS (trailed machines only)

Attach road wheels ensuring that nuts are tight and tyre pressure is 50 p.s.i.

(vii) BALE RAMP OR MAT

Attach bale ramp or mat to rear of chassis. Note Round bale trailed machines have bale ramps all other machines have bale mats.

CHECKS TO BE PERFORMED

1. Check that all bolts and nuts are tight.
2. That all lubrication points are greased.
3. Check that all guards are in place.
4. Check all operating and safety stickers are in place.

2. OPERATIONAL TEST

When all above assembly and checks have been carried out the operation of the machine should be checked as follows:

NOTE: IF YOU ARE NOT TOTALLY FAMILIAR WITH THE OPERATION OF THE TANCO CONTROL SYSTEM READ THIS MANUAL IN FULL BEFORE PROCEEDING WITH OPERATIONAL TEST.

1. Attach machine to tractor.
2. Connect hydraulic hoses to D/A service on tractor.
3. Fit controller box inside cab.
4. Connect control box to machine and connect power cable direct to tractor battery. It is important that the leads are connected with the correct polarity.
5. Fit cable control actuator socket to convenient position in cab and locate actuators in socket.
6. Lock hydraulic lever in tractor so that oil is flowing through system.
7. Check function by operating control levers.
 - (a) Lift arm up and lift arm down. NOTE ensure lift arm is down before moving to (b).
 - (b) Turntable rotation forward and reverse.
 - (c) Tip up and down checking hoses are o.k.
8. Switch controller on.
9. Switch controller to manual operating mode by operating toggle switch.
10. Check Cut & Start plunger out and in.
11. Switch machine to AUTO mode then run through the Wrapping cycle. See operating instruction section of this manual on how the machine should perform, and if any function fails to operate correctly consult fault finding section of the operators manual.

3. CUSTOMER CHECKS

Before despatching consult customer on the following points:

1. That the machine model suits his requirements.
2. If machine is to be operated on a tractor with a closed centre hydraulic system then a closed centre valve is required, see separate instructions.
3. That the tow hitch type is compatible with the tractor. Three different hitch types are available.

TRANSPORT INSTRUCTIONS

1. Never use straps around the machine when lifting. Use only the following lifting points :- 3pt. Linkage frame and two sockets on each side of the main frame at rear.
2. When transporting machine on tractor three point Linkage the bale loading arm should be in the fully raised position and the safety prop fitted .

MACHINE IDENTIFICATION

The Serial Number plate is located on 3pt. Linkage frame.

Always refer to this number when ordering parts.
The Spare parts catalogue number and description should be used.
The reference numbers are used to help identifying the spare part.

For your records write Serial number here.

Serial Number. _____

PREPARATION OF A NEW MACHINE

1. Check height of film mast to ensure that centre line of film spool is level with the centre line of the bale on the turntable. This will alter with different bale diameters. If this alignment is not correct more film than necessary will be used. See Fig 1. Page 15.
2. When connected to John Deere* tractor the valve must be converted to closed centre. See Page 18.

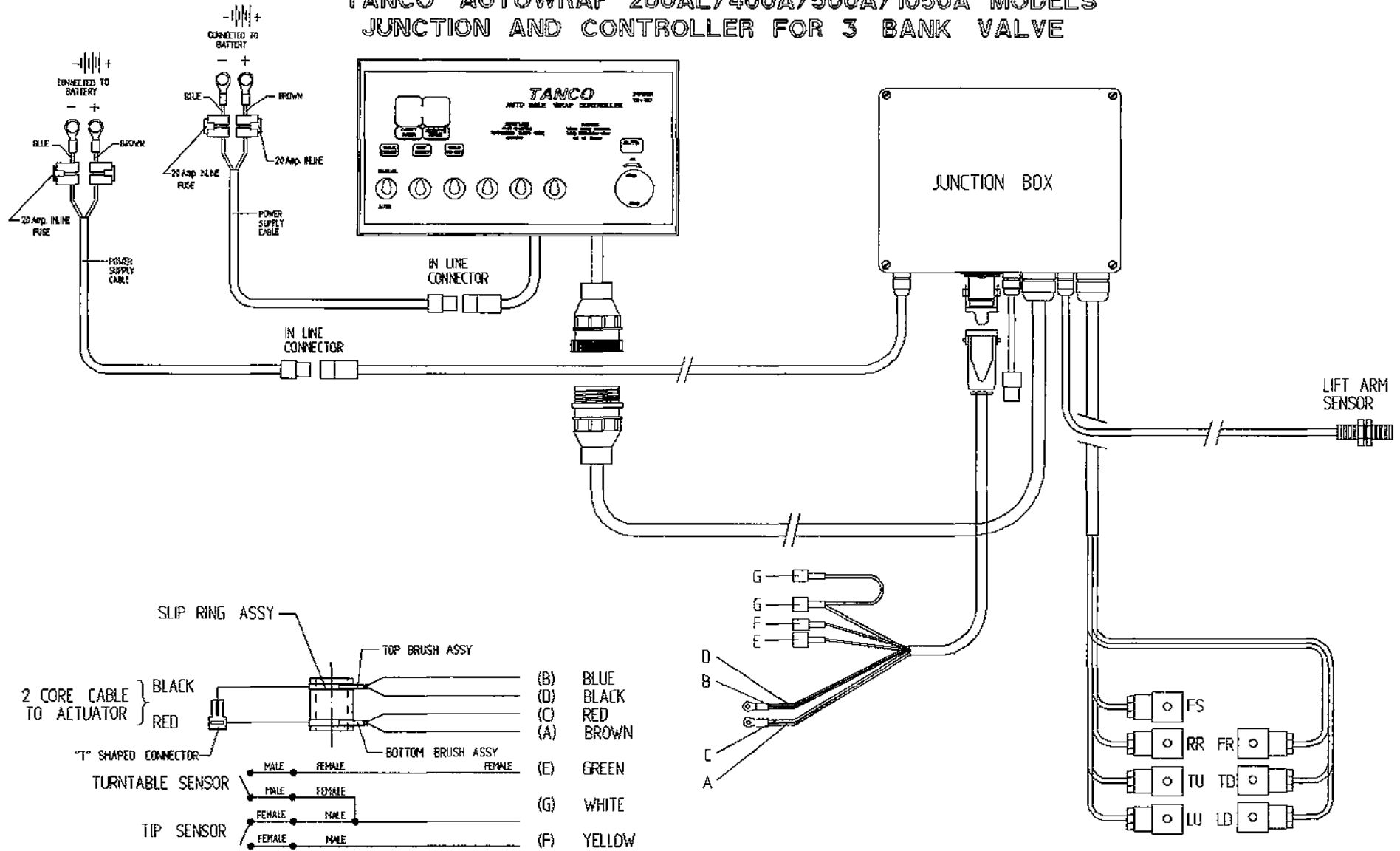
HYDRAULIC CONNECTIONS

Connect the feed and return hoses from the Autowrap valve to the tractor's double-acting facility.

NOTE: The return hose is fitted with a non-return valve to protect the Autowrap from damage in the event of incorrect connection to tractor hydraulics.

NOTE* To ensure maximum efficiency and length of life of hydraulic components this machine requires a clean supply of hydraulic oil. IT IS RECOMMENDED THAT THE TRACTOR HYDRAULIC FILTER ELEMENT BE REPLACED AND THEREAFTER MAINTAINED IN ACCORDANCE WITH THE MANUFACTURERS RECOMMENDATIONS.

TANCO AUTOWRAP 200AL/400A/500A/1050A MODELS JUNCTION AND CONTROLLER FOR 3 BANK VALVE



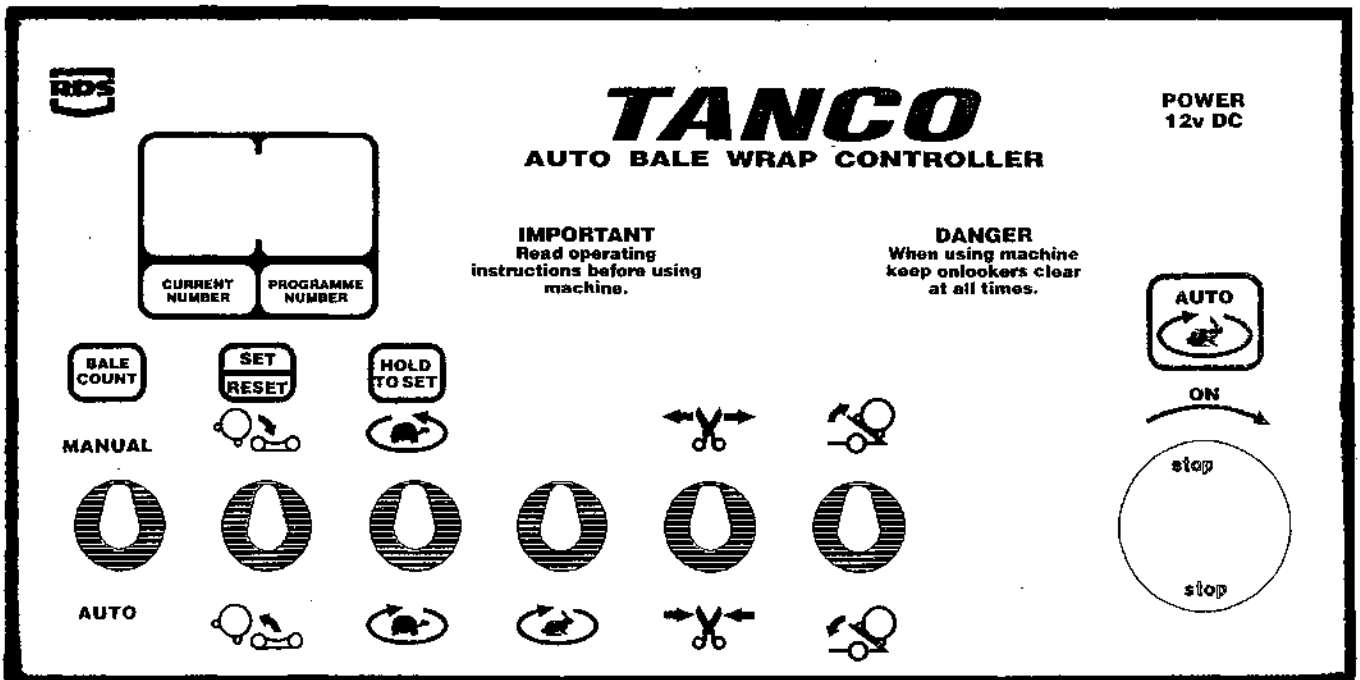
AUTOMATIC BALE WRAP CONTROLLER

The control unit on the 1994 Autowrap allows full automated control of the bale wrapping sequence. The control unit is pre-programmed to automatically wrap the bale to the required number of revolutions. Once complete, the turntable stops in the correct position to allow the film to be cut and held. Incorporated is also an inching override facility on the control unit to move the turntable, left or right, to ensure that the film is properly gathered. Once the turntable is lowered it rotates automatically back through 90 degrees to facilitate loading the next bale. Loading and tipping off of the bale is operator controlled using switches on the control unit.

The programming of the Automatic Bale Wrap Controller is easily done by following the steps outlined below.

Once the unit is switched on, the number of required turntable revolutions appears on the right hand display. To change this press and hold the "hold to set" button, see fig 1., then press the "set/reset" button. The first digit of the number will then blink and count from 0-9. Release the "set/reset" button at the required number. By pressing the "set/reset" again the second digit can be changed.

The monitor counts the number of bales per batch and the cumulative total. To see these, press the "bale count" button. The first number to appear is the batch total. If the button is held down for 10 seconds, a line will appear on the display, followed by the cumulative number wrapped. The batch count can be reset to 0 by holding the "bale count" button down and pressing the "set/reset" once. The cumulative total cannot be returned to zero.



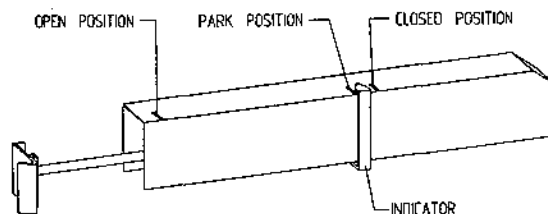
OPERATOR ACCESSIBLE MONITOR PROGRAMMES

The Auto Bale Wrap Controller display a total of 8 programmes. To access the programming mode, turn the power off by pressing the red button, then press and hold the 'hold to set' key and turn the power on, by rotating the red button. Now you have accessed to the programming mode. A chevron 'V' will appear in the left side of the left display - this indicates the first function. By pressing the 'hold to set' key the next programme is accessed and so on. The chevron 'V' will move across the display indicating each of the 8 functions. The functions and settings are as follows.

Programme 1: Park Position
Display Reading: 5.5 Seconds



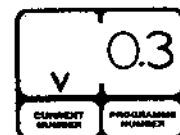
Function: Time required for the 'Cut and Start' Actuator to return from the 'Open' position to the 'Park' position (See Diagram).



Due to varied output from tractor batteries, this reading may have to be altered to ensure that the indicator arm stops at the 'park' position.

- (i) If the indicator arm passes the 'park' position, then reduce the valve by 0.1 sec. Repeat this until correct.
- (ii) If the indicator arm does not reach the 'park' position, then increase the valve by 0.1 seconds until corrected.

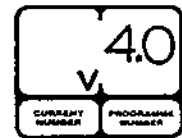
Programme 2: Stop Position for the Cut and Start
Display Reading: 0.3 seconds.



Function: This programme sets the point at which the 'Cut and Start' stops under the film at the end of the automatic wrapping cycle. This Value is adjusted.

- (i) If the turntable rotates too far and the 'Cut and Start' passes under, then reduce the setting by 0.1. Repeat until corrected.
- (ii) If the turntable rotate does not far enough and the 'Cut and Start' does not line up with the film, then increase the setting by 0.1. Repeat until corrected.

Programme 3: Tip up.
Display reading: 4.0



Function: This controls the time for which the tipping ram extends out after the 'Cut and Start' closes. This value is changed only when the setting of the rear magnet that impulses the tip sensor, is changed;

- (i) If the magnet is adjusted upwards then this setting will have to be increased.
- (ii) If the magnet is adjusted downwards then this setting is decreased. Adjustment is in 0.5 second increments.

Programme 4: Tip up to tip down delay
Display reading: 0.5



Function: Duration in seconds that the tipping ram remains fully extended between tip up and tip down.

Programme 5: Tip down.
Display reading: 4.8



Function: This controls the time required for the turntable to tip down to the horizontal position. Note: this setting is increased if the film pull down arm does not retract fully. Adjust in 0.1 increments.

Programme 6: Stop Position in Reverse.
Display Reading: 0.3



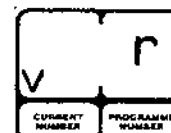
Function: This controls the point at which the turntable will stop when it rotates back to facilitate loading. This setting is only altered;

- (i) When the turntable rotates back too far then decrease this value by 0.1. Repeat until corrected.
- (ii) When the turntable does not rotate back enough then increase this value by 0.1. Repeat until corrected.

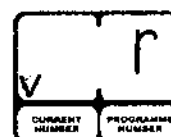
Programme 7: Machine Operation.

There are four separate settings for this programme depending on how the machine is being used. Two settings apply to the remote control models and two to the non remote models.

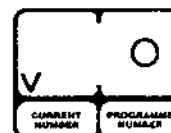
Remote control mode with 90 degrees reverse not operational = Symbol **r**.



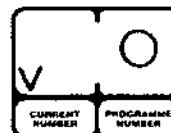
Remote control mode with 90 degrees reverse operational = Symbol **R**.



Non remote mode without 90 degrees reverse operational = Symbol **o**.



Non remote control mode with 90 degrees reverse operational = Symbol **O**.



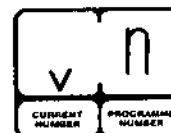
Programme 8: Tractor hydraulics.

Designed to convert the hydraulic system to suit open or closed centre hydraulics to tractor;

Closed centre = Symbol **J**



Open centre = Symbol **n**.



NOTE: An additional valve is required for operating in the **J** mode.

MODE OF OPERATION

Automatic Mode;

1. Lower bale lift arm to correct position and pick up the bale.
2. Position the bale gently onto the turntable with a grab ensuring that it is central between the end rollers.
3. Once loaded, the arm is lowered and the 'Auto Start' button is pressed to commence wrapping. **NOTE:** The table must be in the correct loading position before the 'Auto Start' button is pressed. If not the table may stop in the wrong position at the end of wrapping.
4. In the automatic cycle the turntable will start off slowly for a half of one revolution before it reaches full speed. On the last revolution it will slow down and stop in the correct position to allow the film to be cut and held. **NOTE:** It is possible to move the turntable, left or right, to align the plastic by using the remote control or the toggle switch.
5. During the wrap cycle the 'Cut and Start' will extend out automatically. An indicator on the outside panel indicates what stage the 'Cut and Stat' is at. On the third revolution the actuator extends out moving the indicator from the close position to the open position. On the sixth revolution the actuator returns to the park position indicating that the 'Cut and Start' is ready to close. The indicator must be at the park position in either manual or automatic mode before the 'Cut and Start' will close.
6. When in a safe position to do so, press the tip off button.
7. The tip off sequence is automatic and once the turntable lowers it will rotate backwards through 90 degrees to facilitate loading, if required.

Manual Mode:

1. Switch to manual on the monitor.
2. Load the bale as outlined above.
3. Using the slow rotation switch, start the wrapping cycle.
4. After half of a revolution, switch to the fast wrapping mode by pressing the appropriate switch.
5. During the wrapping extend the Cut and Start out to the end mark and return the indicator to the 'Park Position'.
6. At the end of the wrap cycle line up the 'Cut and Start' with the film.
7. When safe to do so, tip off the bale and lower the turntable.
8. Position the turntable to load the next bale.

OPERATING INSTRUCTIONS

1. Fit roll of film following the instructions on the film mast.
2. Pull off enough film to reach the cut and start gripper assembly.
3. Pull the plunger open and attach tag end of film between the gripper jaws.
4. Drop wrapper until skids just touch the ground.
5. Adjust top link until wrapper is level.
6. Lower the loading arm stabiliser skid until it touches the ground and pressure is off safety prop (8) Fig. 4 which should then be removed and stored on spigots on loading arm.
7. Lower loading arm until it just touches ground. Remove safety stay (7) Fig. 4 from storage spigots and refit it to spigot on chassis, ensuring slotted hole is fitted to end of lift ram pivot pin and secure with lynch pins.
8. Locate bale on lift arm, then raise it and gently roll bale onto turntable. Lower arm.
9. Start wrapping, turntable rotating clockwise. Film tension is automatically set so that width of film applied to the bale stays at approx width of 405 - 410mm for 500mm wide film roll and 615 - 620 for 750mm wide film roll.
10. Continue wrapping until signal from bale wrap indicator sounds (required number of revolutions has been reached). Then stop with cut and start unit facing towards front of machine and film aligned with opened gripper section of cut and start.
11. Tip bale from machine. When the machine is almost fully tipped the cut and start unit grips and cuts the film and the bale is then unloaded onto the bale mat.
12. Lower the turntable and rotate anticlockwise through 90 degrees and stop with cut and start opposite to lift arm.
13. Repeat operations 8 - 12 as required.

NOTE: The film need only be attached at the start of a roll, after that, the sequence is automatic.

WARNING; LIFT ARM

The lift arm on this machine is designed to pick up and deposit bales onto the turntable prior to wrapping. It is not intended to be used for transporting bales over distances or for use as a stabiliser whilst wrapping. Therefore any use of the lift arm outside of its primary function will be deemed to be abuse and will void all warranty.

It is not advisable to transport bales on the turntable with the wrapper raised on the tractor linkage.

On completion of wrapping, stop turntable with rollers parallel to loading arm which must then be raised and secured as follows.

- A. Remove safety stay (7) Fig. 4 and relocate on the stabiliser skid.
- B. Raise loading arm fully and relocate safety prop (8) Fig. 4 between loading arm and chassis.
- C. Raise stabiliser skid to park position .

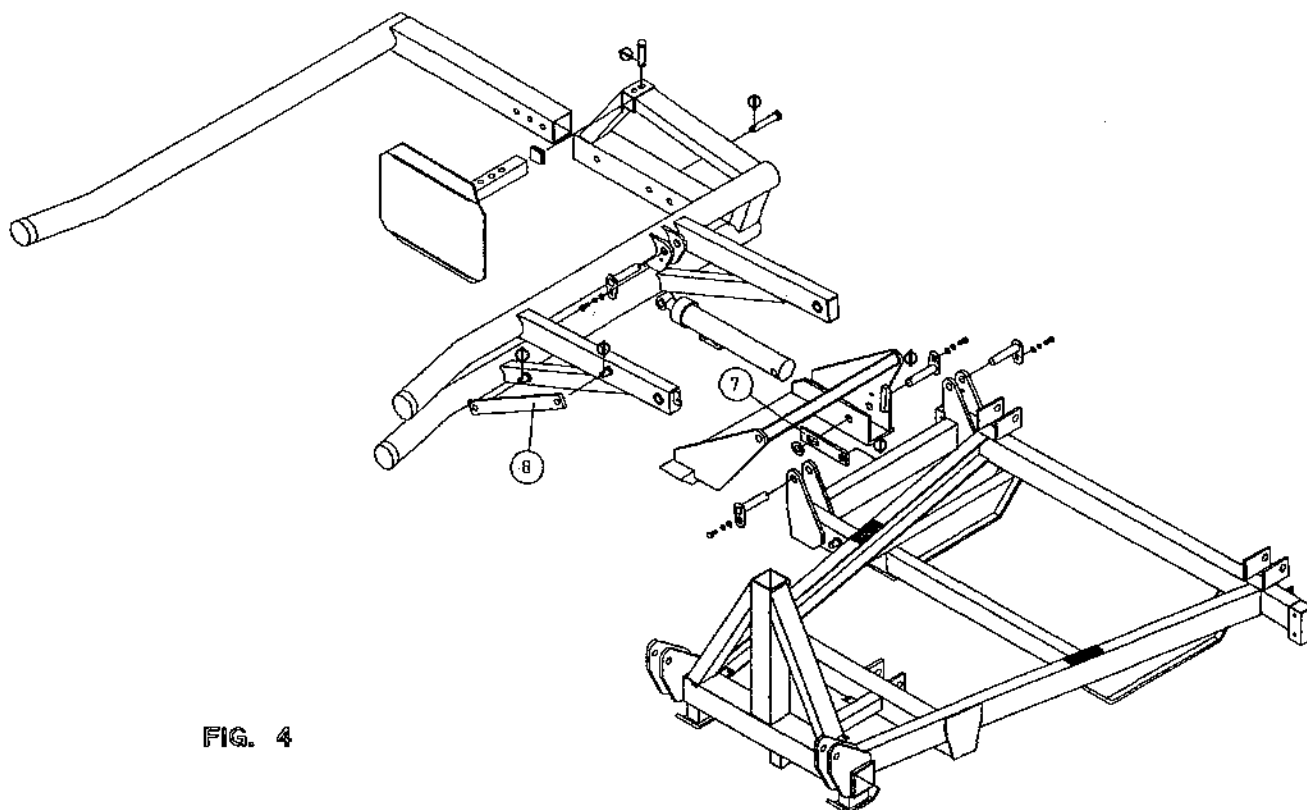


FIG. 4

FILE NAME WD63-PL19

FILM OVERLAP SYSTEM.

The Autowrap is fitted as standard with the 2 x 2 x 50% film overlap system. This is achieved by means of a chain drive which ensures that the correct number of film layers are applied to the bale after a specific number of revolutions of the turntable. The number of revolutions required to wrap a bale depends on width of film being used and bale size - See table below. The chain to be positioned on outer sprockets for 500mm wide film, and on inner sprockets for 750mm wide film. See fig. A, Below.

For silage bales we recommend the application of a minimum of four layers of film.

Bale Size	Width of Film Roll	Bale Indicator Setting (Revs)
120cm x 120cm	500mm	22
120cm x 120cm	750mm	15
120cm x 137cm	500mm	24
120cm x 137cm	750mm	16
120cm x 150cm	500mm	26
120cm x 150cm	750mm	18

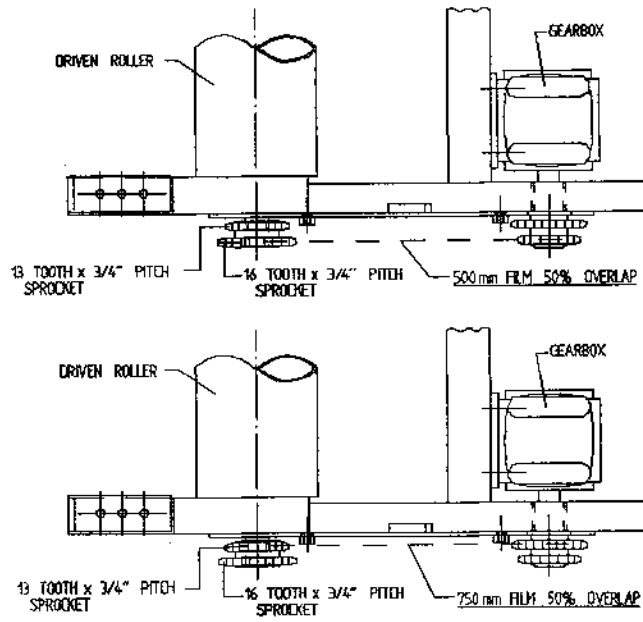


Fig. A

IMPORTANT

The above recommendations are only offered as a guide to correct wrapping of silage bales and the manufactures accept no responsibility for variations that may arise and the consequence of same. They are based upon turntable speeds of up to 25 r.p.m., and a minimum film width of 400mm applied to end of Bale when using 500mm wide film roll or a minimum film width of 600mm applied to end of bale when using 750mm wide film roll - See Page 14 proper maintenance of the machine and its correct operation.

It is the responsibility of the operator to ensure the correct number of wraps are applied, as variances can occur with fluctuations in speed of rotation, film quality and tensioning, shape and density of bale etc.

SERVICE AND MAINTENANCE

1. All nuts and bolts should be tightened after some hours in use and thereafter regularly.
2. Wheel pressure should be normally kept at 42 psi depending on bale weight and field conditions.
3. Inspect moving parts for wear on daily basis.
4. Remove hydraulic motor guard daily and clean loose materials from drive pulley and tensioner roller. Replace guard and lock in position while ensuring it does not collide with rotating turntable assembly.
5. Lubrication.

Drive chain & sprocket	-	grease every 24 hours.
End rollers	-	grease every 24 hours.
Main rollers	-	grease every 24 hours.
Hinge pins on Lift arm	-	grease every 24 hours.
Hinge pins on main tip frame	-	grease every 24 hours.
Hydraulic rams	-	grease every 24 hours.
Wheel bearings	-	grease every 24 hours.
Film reel assy.	-	grease every 24 hours.
Dispenser slave roller	-	oil every 24 hours.
Dispenser gearboxes	-	grease sparingly each month
Main spindle	-	grease every 4000 - 5000 bales.
Gearbox oil level	-	Check every 4000 - 5000 bales
6. Adjustments

Secondary drive chain tension.	:	Adjust after first days work then every 50 hours.
Primary drive chain tension	:	Adjust after first days work then check/adjust every 200 hours. See Fig 2.
Toothed drive belt	:	Adjust tension if slippage occurs See Fig 3.
Main conveyor belt	:	Adjust by moving idler roller up slope being careful to keep it parallel to the main drive roller.
7. Film Dispenser

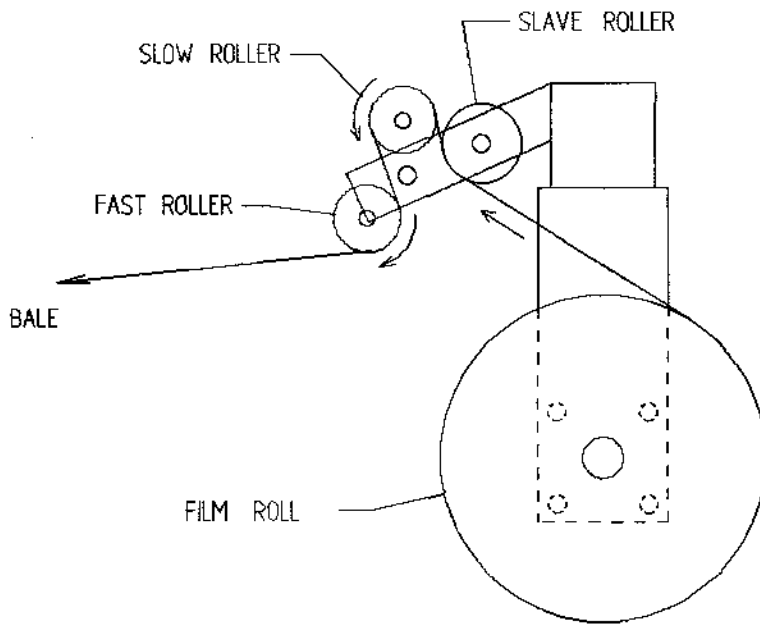
Fit with plunger at top.
Apply one shot of Multi-Purpose Grease
Wash rollers often to avoid build up of Tack from film.
Follow Film threading diagram. See Fig 1.
8. Film Adjustment

Centre of film roll must be in line with centre of bale and film mast should be vertical.

SERVICE AND MAINTENANCE (CNT.)
HYDRAULIC FILTER

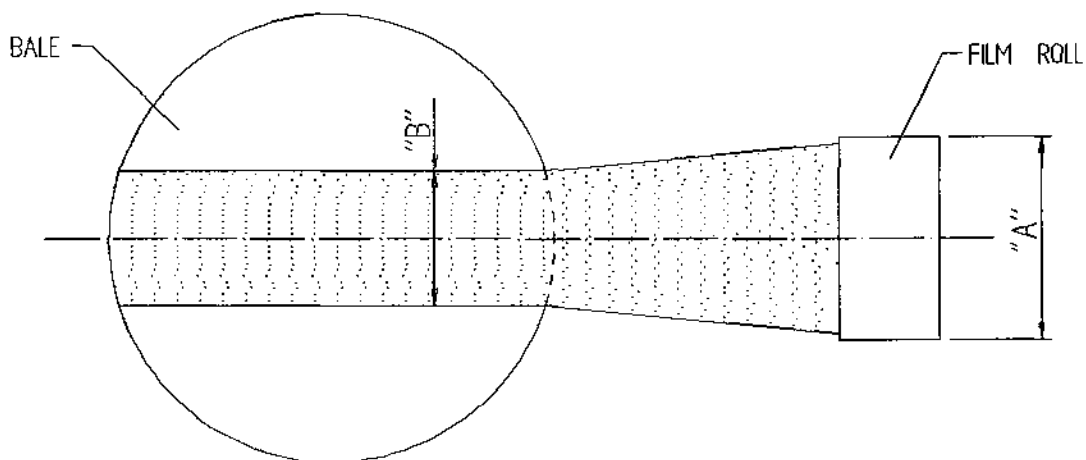
1. Before connecting Autowrap to tractor, change oil in tractor hydraulic system and replace hydraulic filter.
2. After 25 hours max. it will be necessary to replace the element in Autowrap filter.
3. For maintenance purposes it is necessary to change the element after 200 working hours.
4. The element cannot be just cleaned and put back into the filter.

TANCO AUTOWRAP FILM THREADING DIAGRAM



FILM ADJUSTMENT

CENTRE OF FILM ROLL MUST BE IN LINE WITH CENTRE OF BALE AND FILM MAST SHOULD BE VERTICAL.

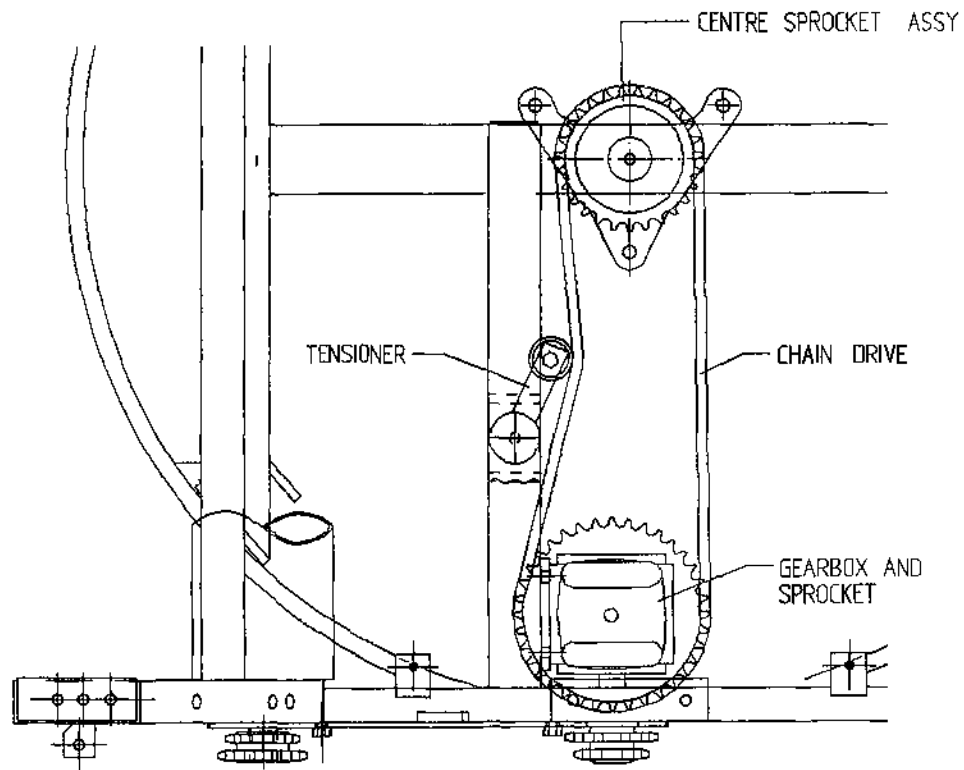


FILM ROLL WIDTH "A"	FILM WIDTH ON END OF BALE "B"
500 mm	400 mm
750 mm	600 mm

Fig. 1

FILE NAME W060-LA21

TANCO AUTOWRAP CONSTANT INDEXING PRIMARY CHAIN DRIVE TENSIONING SYSTEM



CHAIN TENSIONING PROCEDURE

1. LOOSEN M10 BOLT SECURING BELT TENSIONER.
2. TENSION BELT BY ADJUSTING TENSIONER USING SPANNER IN DIRECTION OF ARROW "X" UNTIL SETTING OF 15°-20° IS REACHED.
3. RE-TIGHTEN M10 BOLT TO SECURE TENSIONER IN POSITION.

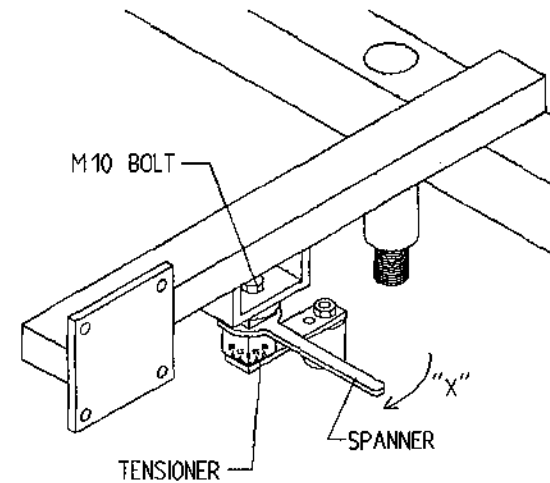


Fig. 2

TANCO AUTOWRAP 1994 DRIVE BELT TENSIONING SYSTEM

BELT TENSIONING PROCEDURE

1. CHECK THAT HYDRAULIC MOTOR MOUNTING BRACKET IS SECURE IN POSITION.
2. LOOSEN M10 BOLT WHICH CLAMPS BELT TENSIONER BODY TO MOTOR MOUNT.
3. TENSION BELT BY ADJUSTING TENSIONER USING SPANNER IN DIRECTION OF ARROW "X" UNTIL SETTING OF 30 IS REACHED.
4. RE-TIGHTEN M10 BOLT TO SECURE TENSIONER IN POSITION.

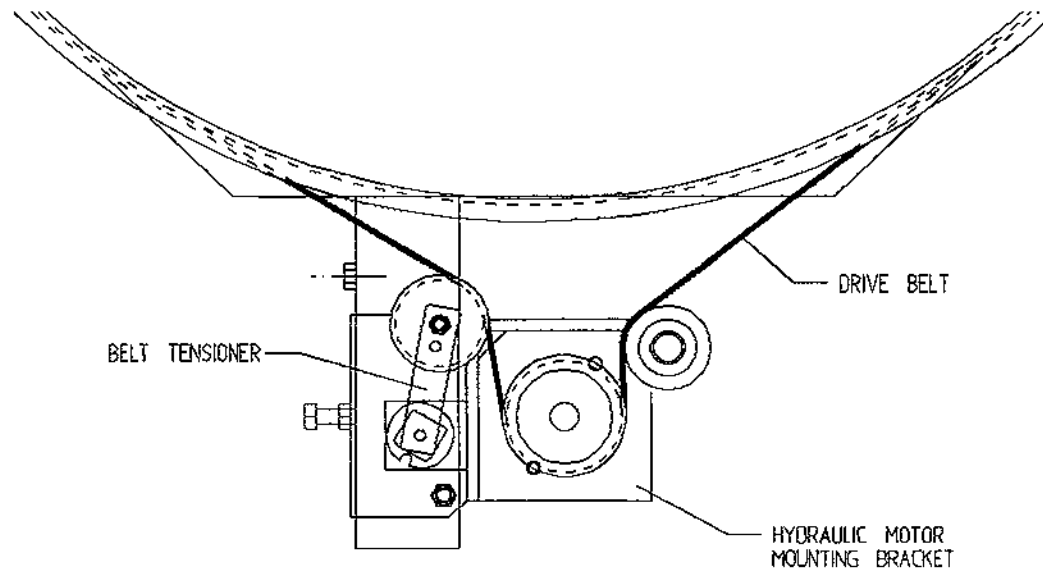
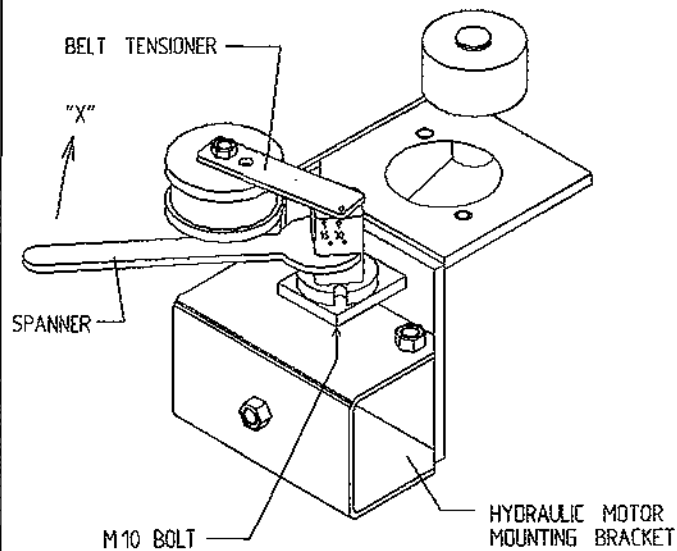


Fig. 3

FILM ADAPTOR

OPERATING INSTRUCTION

500mm wide film rolls are used as standard on 200, 300, & 400 autowrap Models while 750mm wide film rolls are used as standard on 500 model. If however, it is found necessary to use 500mm wide rolls along with 750mm film dispenser the following instructions must be adhered to: (NOTE: Failure to do so will result in inadequate wrapping and bale spoilage).

1. Fit film adaptor to top end of 500mm wide film roll as shown opposite (fig. 1.)
2. Remove drive chain from inner set of sprockets and fit to outer set of sprockets as shown in Fig. below.
3. Re-tension chain.
4. Adjust height of film mast so that centre of film roll is in line with centre of bale on the turntable.
5. Adjust bale wrap indicator setting from 15 to 22 revolutions for 120cm x 120cm blaes. (See page for guide to bale wrap indicator settings).

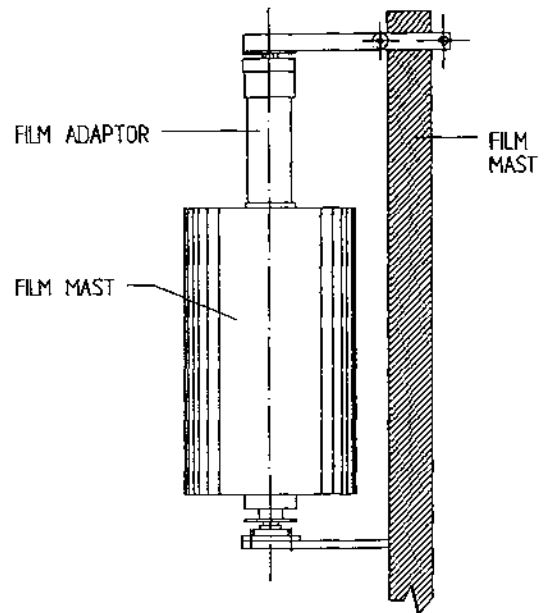
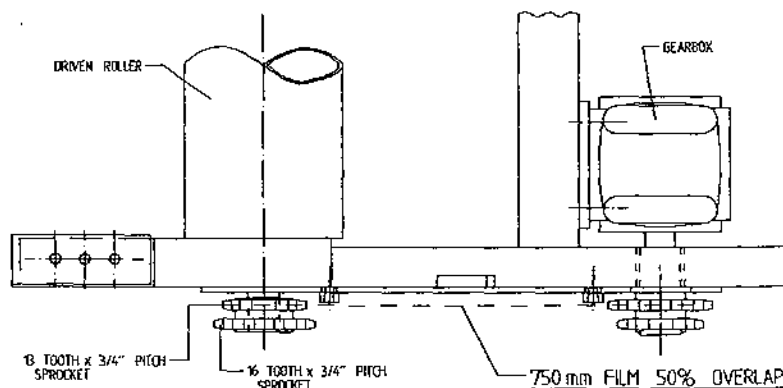
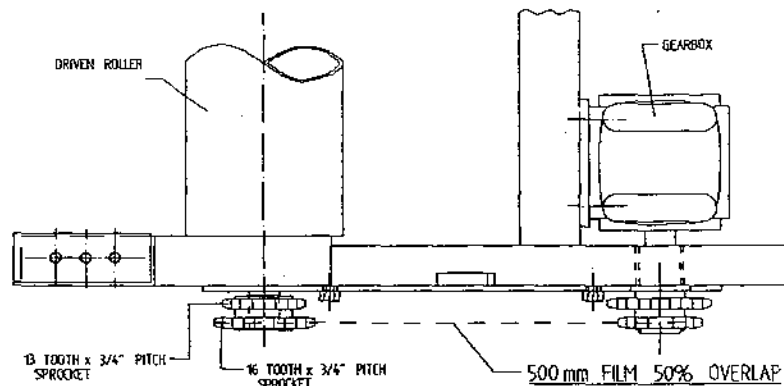
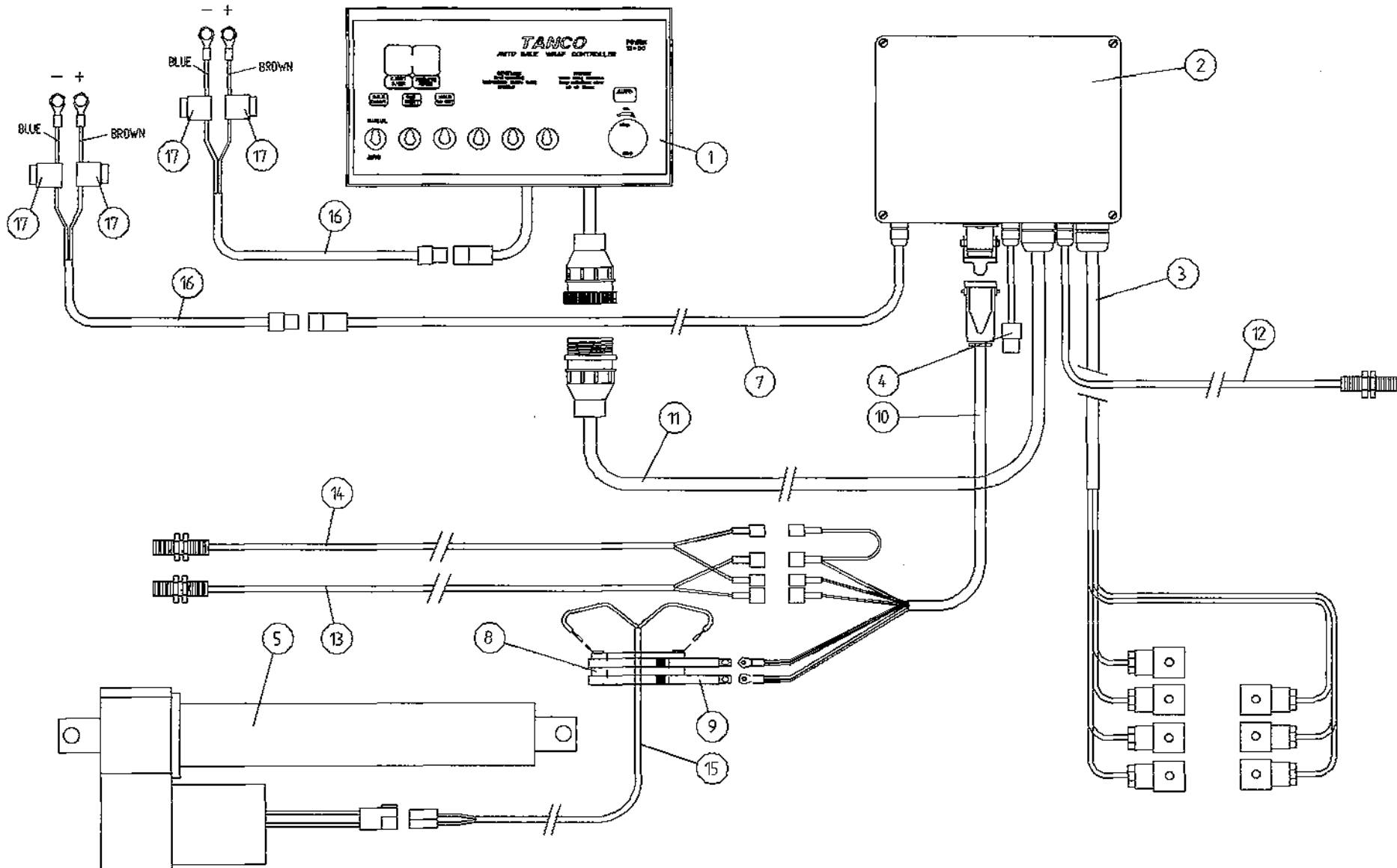


Fig. 1



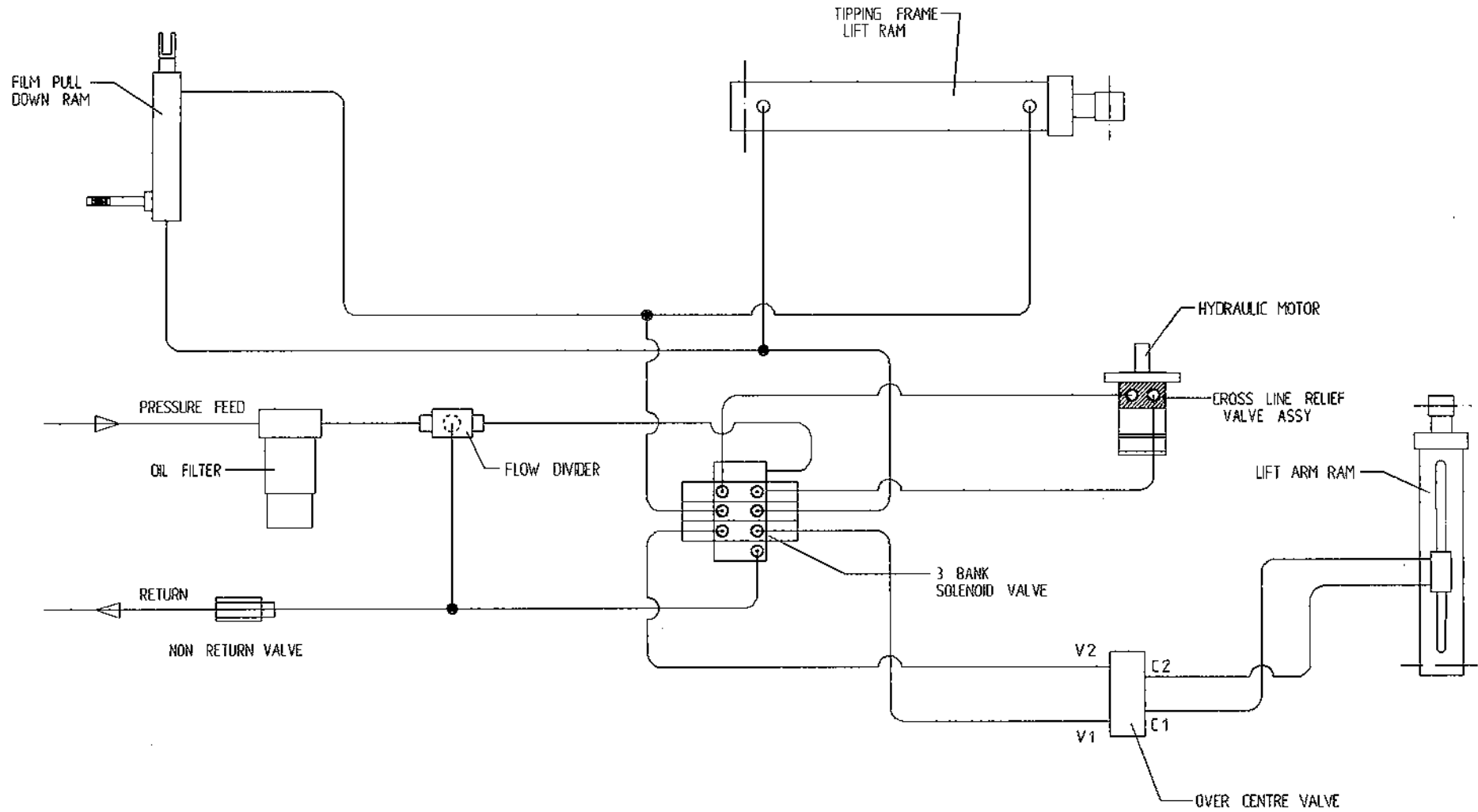
TANCO AUTOWRAP 200AL MODEL ELECTRICAL COMPONENTS



**TANCO AUTOWRAP 200AL MODELS
ELECTRICAL COMPONENTS
PARTS LIST**

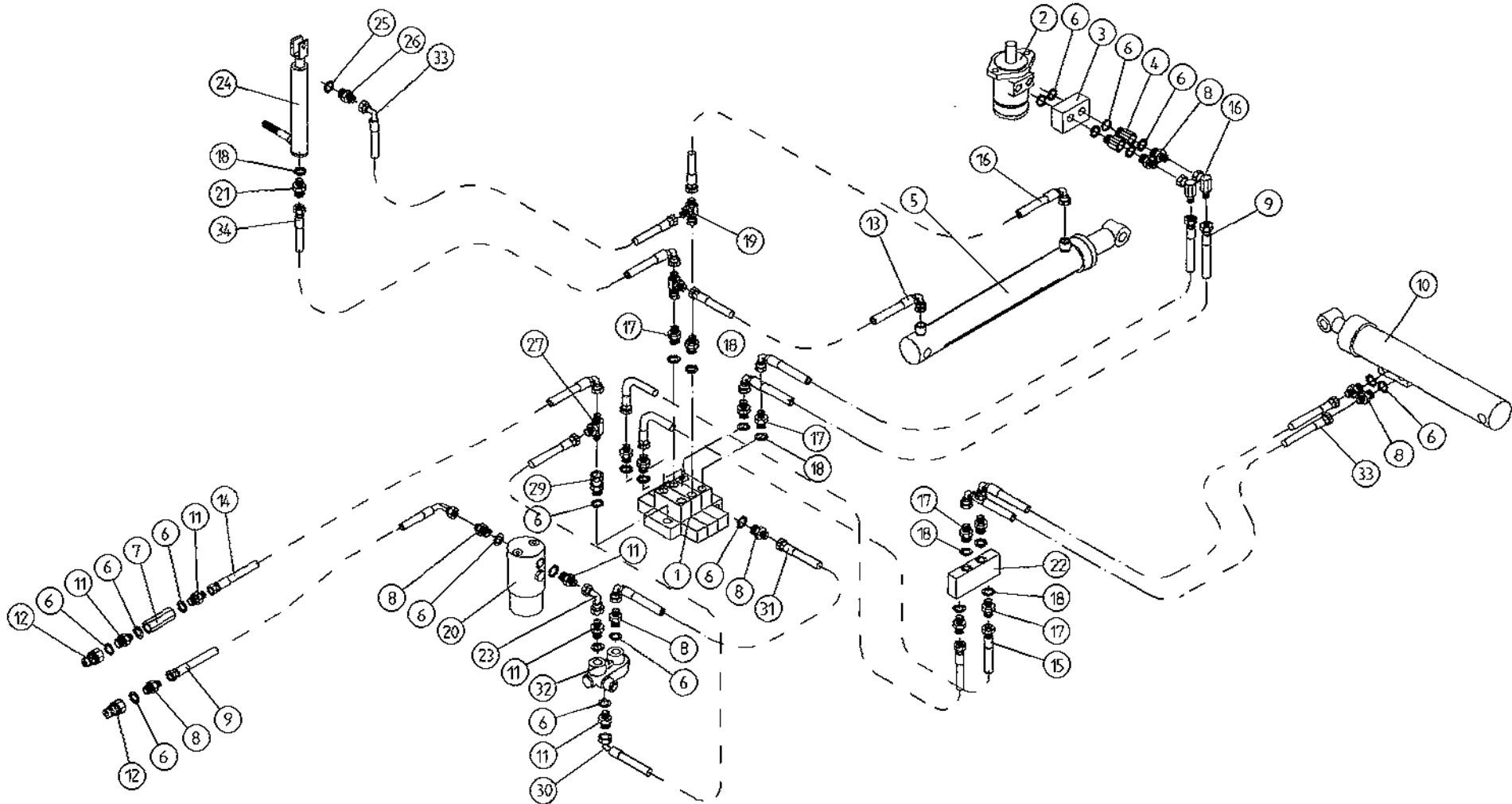
ITEM NO	DESCRIPTION	QTY	PART-NO
1.	CONTROL BOX	1	D606
2.	JUNCTIN BOX (3BANK SPOOL VALVE)	1	ZDG-JB3
3.	LOOM FOR VALVE C/E HIRSCHMAN	1	ZD606-082
4.	SYSTEM PRESSURE LEAD	1	ZD606-070
5.	WRANER LINEAR ACTUATOR	1	ZD605-510
6.	1 1/4" FUSE HOLDER	1	ZD606-100
7.	MAIN LEAD FOR JUNCTION BOX	1	ZD606-050
8.	SLIP RING ASSY	1	ZD605-308
9.	BRUSHES	1	ZD605-302
10.	7 CORE CABLE C/W HEARTING PLUG	1	D605-7C
11.	24 CORE INTERCONNECTING LEAD C/W CONNECTORS	1	D605-24C
12.	LIFT ARM SENSOR	1	ZD606-LAS
13.	ROTATING SENSOR	1	ZD606-RS
14.	TIP SENSOR	1	ZD606-TS
15.	TWO CORE CABLE FOR SLIP RING	1	D605-02C
16.	MAIN BATTERY LEAD	2	ZD606-030
17	IN-LINE FUSE	4	ZD606-100

TANCO AUTOWRAP 200 AL MODELS HYDRAULIC CIRCUIT DIAGRAM



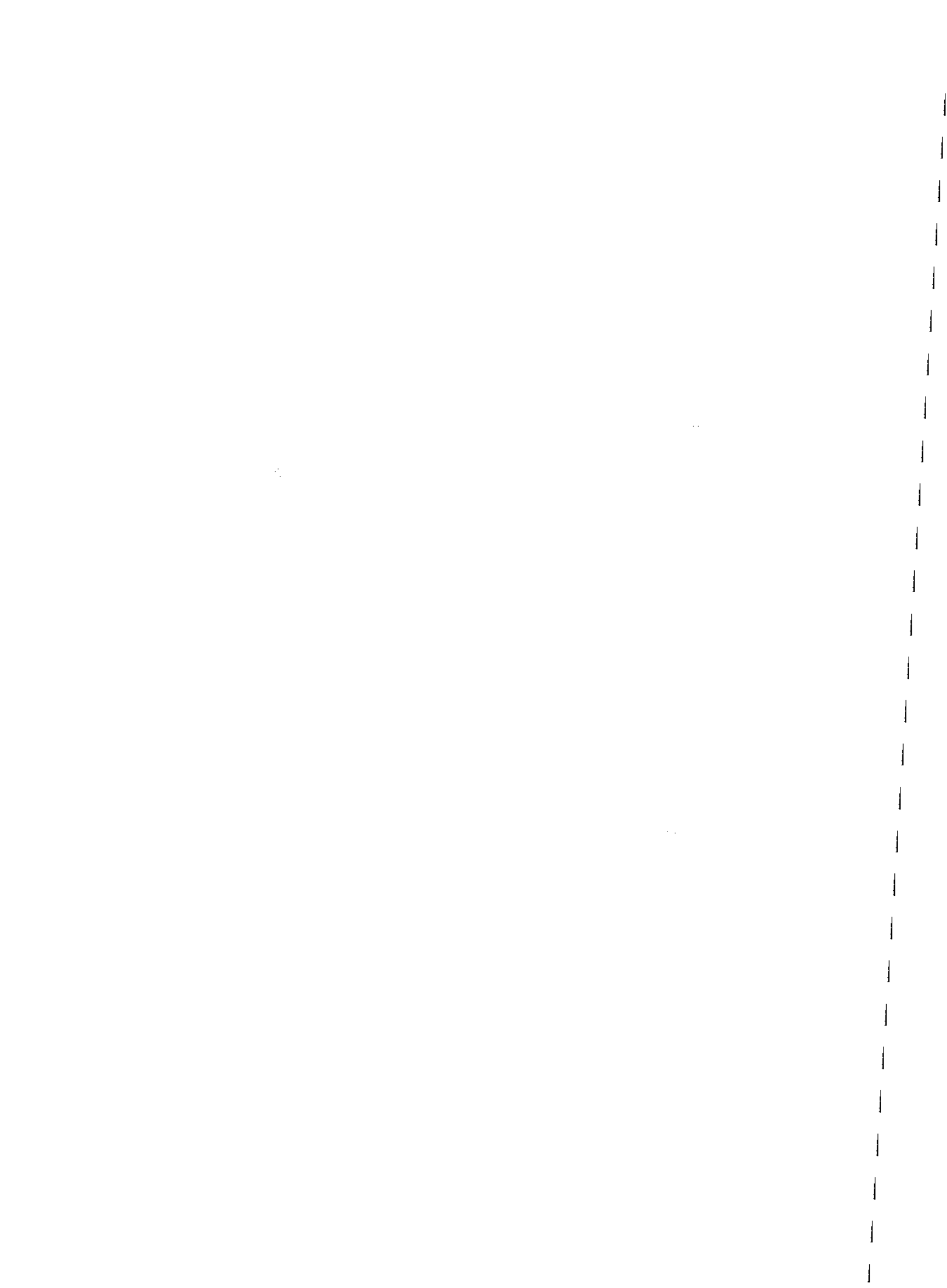
25

TANCO AUTOWRAP 200 AL MODEL HYDRAULIC COMPONENTS



TANCO AUTOWRAP 200AL MODELSHYDRAULIC COMPONENTSPARTS LIST

ITEM NO.	DESCRIPTION	QTY.	PART-NO
1.	3 BANK SOLENOID VALVE	1	Z01-03-10-A2
2.	HYDRAULIC MOTOR (C.L.)	1	Z01-02-AR75
3.	CROSS LINE RELIEF VALVE.	1	Z01-03-002
4.	1/2" B.S.P. BOTTOM BANJO BOLT (SPECIAL)	2	Z01-18-081
5.	HYD. RAM (TIPPING FRAME).	1	Z01-01-A687
6.	1/2" DOWTY WASHER	15	Z01-04-03
7.	1/2" NON RETURN VALVE	1	Z01-03-017
8.	1/2" x 3/8" ADAPTOR	11	Z01-06-06-08
9.	72" ST/90 3/8" D/W HOSE	3	Z38-R2-72-S9
10.	48" ST/90 3/8" D/W HOSE	1	Z28-R2-48-S9
11.	1/2" x 1/2" ADAPTOR	3	Z01-06-08-08
12.	1/2" MALE END Q/R COUPLING	2	Z01-15-081
13.	36" ST/90 3/8" D/W HOSE	1	Z38-R2-36-S9
14.	96" ST/90 1/2" D/W HOSE	1	Z12-R1-96-S9
15.	12" ST/ST 3/8" D/W HOSE	2	Z38-R2-12-SS
16.	3/8" MALE/FEMALE 90 ELBOW	2	Z04-14-018
17.	3/8" x 3/8" ADAPTOR	4	Z01-06-06-06
18.	3/8" DOWTY WASHER	5	Z01-04-02
19.	3/8" MALE x 3/8" MALE x 3/8" FEMALE 'T' PIECE	2	Z01-12-002
20.	FILTER	1	Z01-24-08
21.	3/8" X 3/8" ADAPTOR FITTED WITH 0.06" RESTRICTOR	1	Z01-03-40
22.	OVER CENTRE VALVE	1	Z01-03-08-08
23.	1/2" FEMALE x 1/2" FEMALE 90 ELBOW	1	Z01-14-018
24.	HYD RAM D/A (PULL DOWN ARM)	1	Z01-01-AW25
25.	1/4" DOWTY WASHER	1	Z01-04-01
26.	1/4" x 3/8" ADAPTOR	1	Z01-06-04-06
27.	1/2" MALE "T" PIECE	1	Z01-11-003
28.	1/2" MALE/FEMALE 90 ELBOW	1	Z01-14-016
29.	1/2" MALE x 1/2" FEMALE ADAPTOR	1	Z01-05-08-08
30.	20" ST/90 1/2" D/W HOSE	1	Z12-R2-20-S9
31.	30" ST/90 3/8" D/W HOSE	1	Z38-R2-30-S9
32.	FLOW DIVIDER	1	Z01-03-10-A6
33.	96" ST/90 3/8" D/W HOSE	3	Z38-R2T-96-S9
34.	84" ST/90 3/8" D/W HOSE	1	Z38-R2T-84-S9



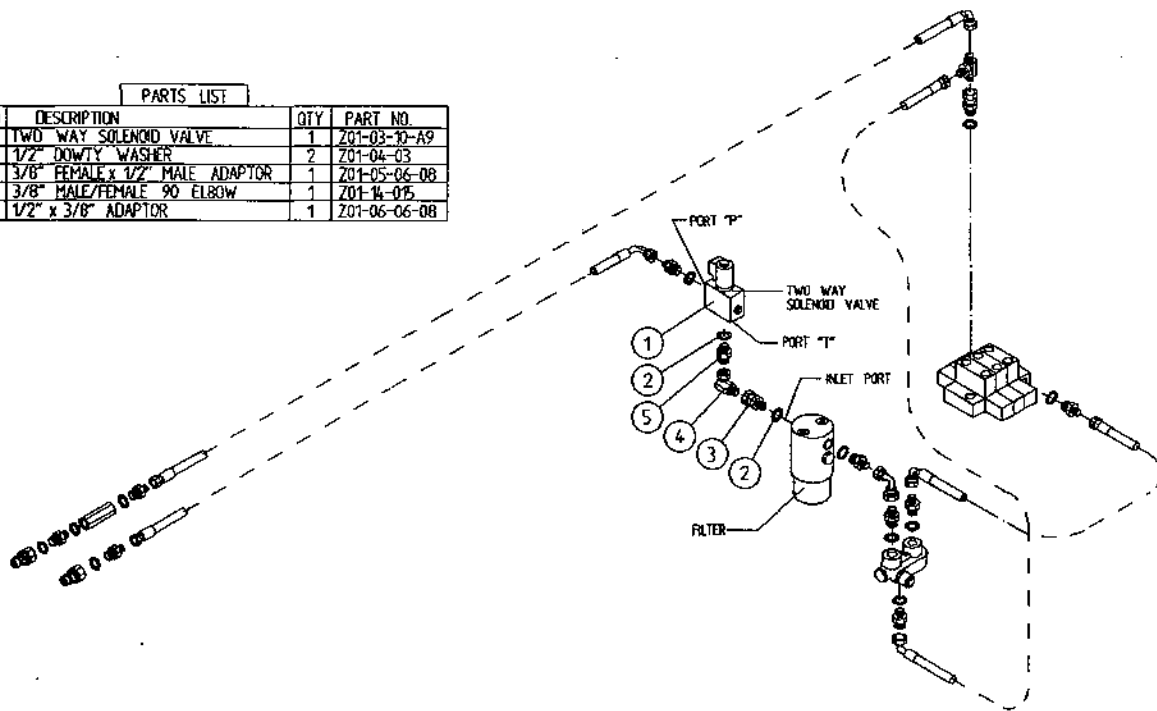
**INSTRUCTION FOR FITTING TWO WAY SOLENOID VALVE TO TANCO
AUTOWRAP 200AL MODEL.**

**REQUIRED WHEN OPERATING MACHINES ON TRACTORS WITH CLOSED CENTRE
HYDRAULIC SYSTEMS.**

1. Disconnect st/90 hose from inlet port on oil filter.
2. Connect port "T" on solenoid valve assembly to inlet port on oil filter.
3. Reconnect st/90 hose to port "P" on solenoid valve.
4. Connect 2 pin female connector to existing 2 pin connector at junction box.
5. Change the seventh controller function setting from n to J. See instruction manual for further information.

**TANCO AUTOWRAP 200AL MODEL (1994)
TWO WAY SOLENOID VALVE KIT PART NO. Z01-03-018A**

PARTS LIST			
ITEM NO	DESCRIPTION	QTY	PART NO.
1	TWO WAY SOLENOID VALVE	1	Z01-03-10-A9
2	1/2" DOWTY WASHER	2	Z01-04-03
3	3/8" FEMALE x 1/2" MALE ADAPTOR	1	Z01-05-06-08
4	3/8" MALE/FEMALE 90 ELBOW	1	Z01-14-05
5	1/2" x 3/8" ADAPTOR	1	Z01-06-06-08

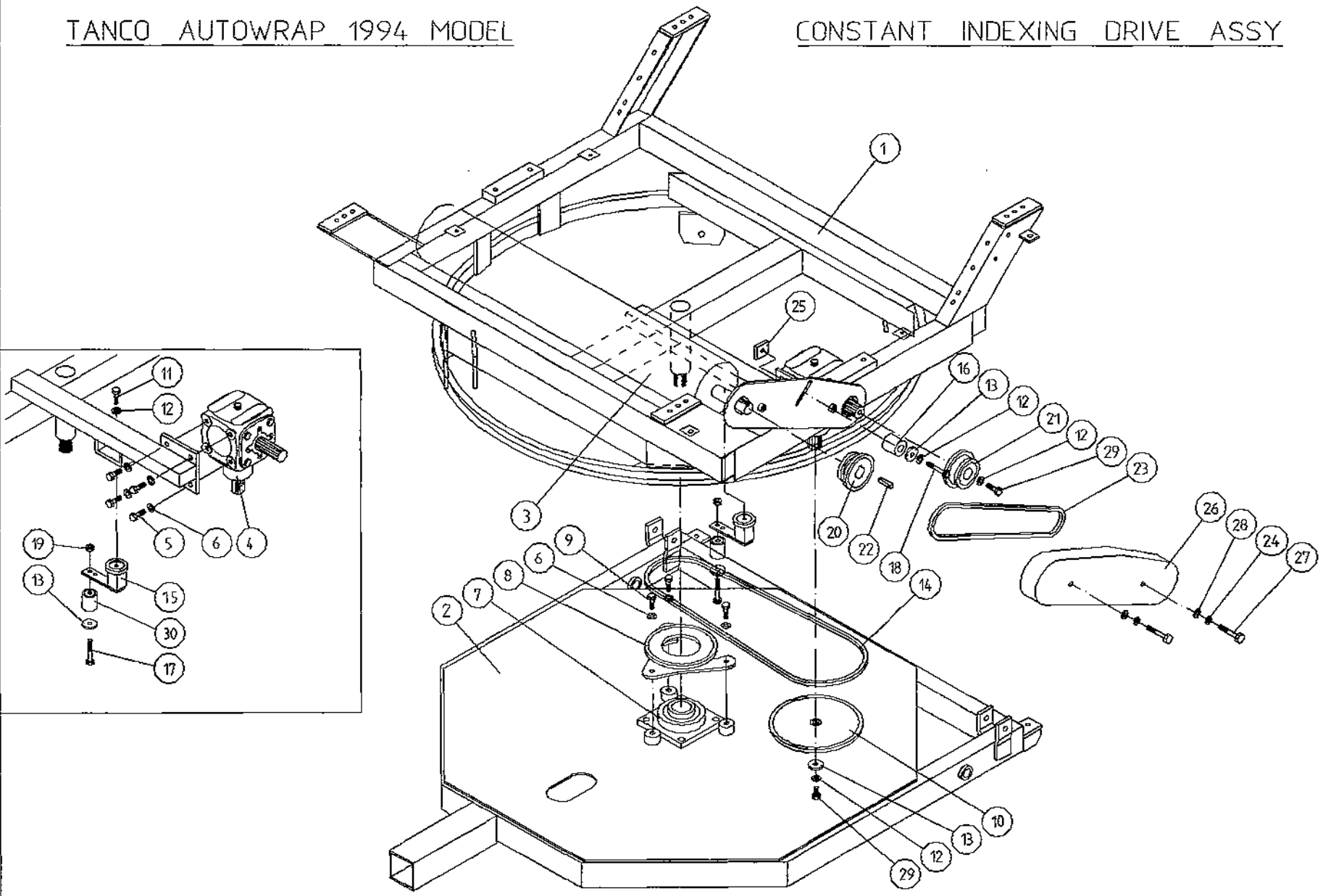


FILE NAME 92280

TANCO AUTOWRAP 1994 MODEL

CONSTANT INDEXING DRIVE ASSY

28

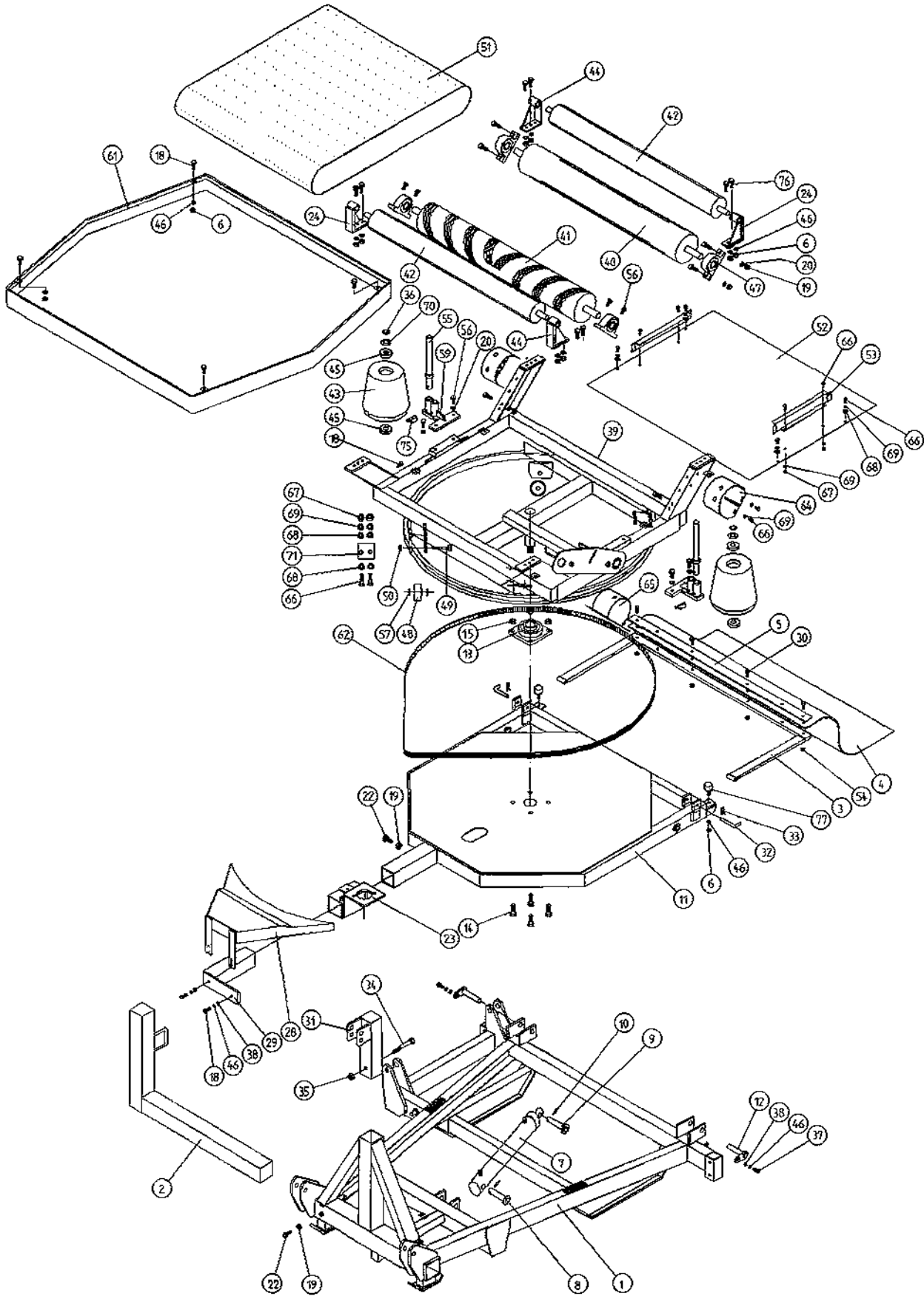


TANCO AUTOWRAP
CONSTANT INDEXING DRIVE ASSEMBLY

PARTS LIST

ITEM NO.	DESCRIPTION	QTY.	PART-NO
1	TURNTABLE ASSY.	1	WD60-TAC
2	TIPPING FRAME ASSY.	1	WD60-TFC
3	DRIVE ROLLER ASSY.	1	WD65-BRD
4	GEAR BOX	1	Z01-25-300
5	M12 HEX HD SET x 30mm LONG	4	Z26-082S
6	12mm DIA SPRING WASHER	7	Z12-02-12
7	2" DIA FLANGE BEARING	1	Z06-49EC
8	CENTRE SPROCKET ASSY 27 TOOTH	1	WD60-CSA
9	M12 HEX HD SET x 25mm LONG	3	Z26-081S
10	36 TOOTH SPROCKET	1	Z06-D65-36S
11	M10 HEX HD SET x 25mm LONG	1	Z26-0611S
12	10mm DIA SPRING WASHER	4	Z12-02-10
13	RETAINING COLLAR	3	WD623-071
14	CHAIN 3/4" PITCH X 87 PITCHES	1	Z09-AW-4
15	ROSTA TENSIONING UNIT ARM	1	Z06-454
16	CHAIN TENSIONER	1	WD65-CT
17	M10 HEX HD BOLT x 65MM LONG	1	Z26-0671B
18	M10 HEX HD BOLT x 80MM LONG	1	Z26-0691B
19	M10 LOCKNUT	1	Z23-10
20	SPROCKET DOUBLE SIMPLEX 13T/16T KEYED	1	Z06-D65-1316K
21	SPROCKET DOUBLE SIMPLEX 13T/16T SPLINED	1	Z06-D65-1316S
22	KEY 5/16" x 5/16" x 32mm LONG	1	WD623-K32
23	CHAIN 3/4" PITCH X 62 PITCHES	1	Z09-AW-3
24	1/2" DIA STAR WASHER	1	Z10-01-121
25	LOCKING FLAT	1	WD623-060
26	CHAIN GUARD	1	WD60-CGC
27	M10 HEX HD SET x 70mm LONG	2	Z26-068B
28	10mm DIA FLAT WASHER	2	Z10-02-10
29	M10 HEX HD SET x 30mm LONG	2	Z26-062S
30.	CHAIN TENSIONER	1	WD60-CT

TANCO AUTOWRAP 200 SL/200 AL MODEL 1994



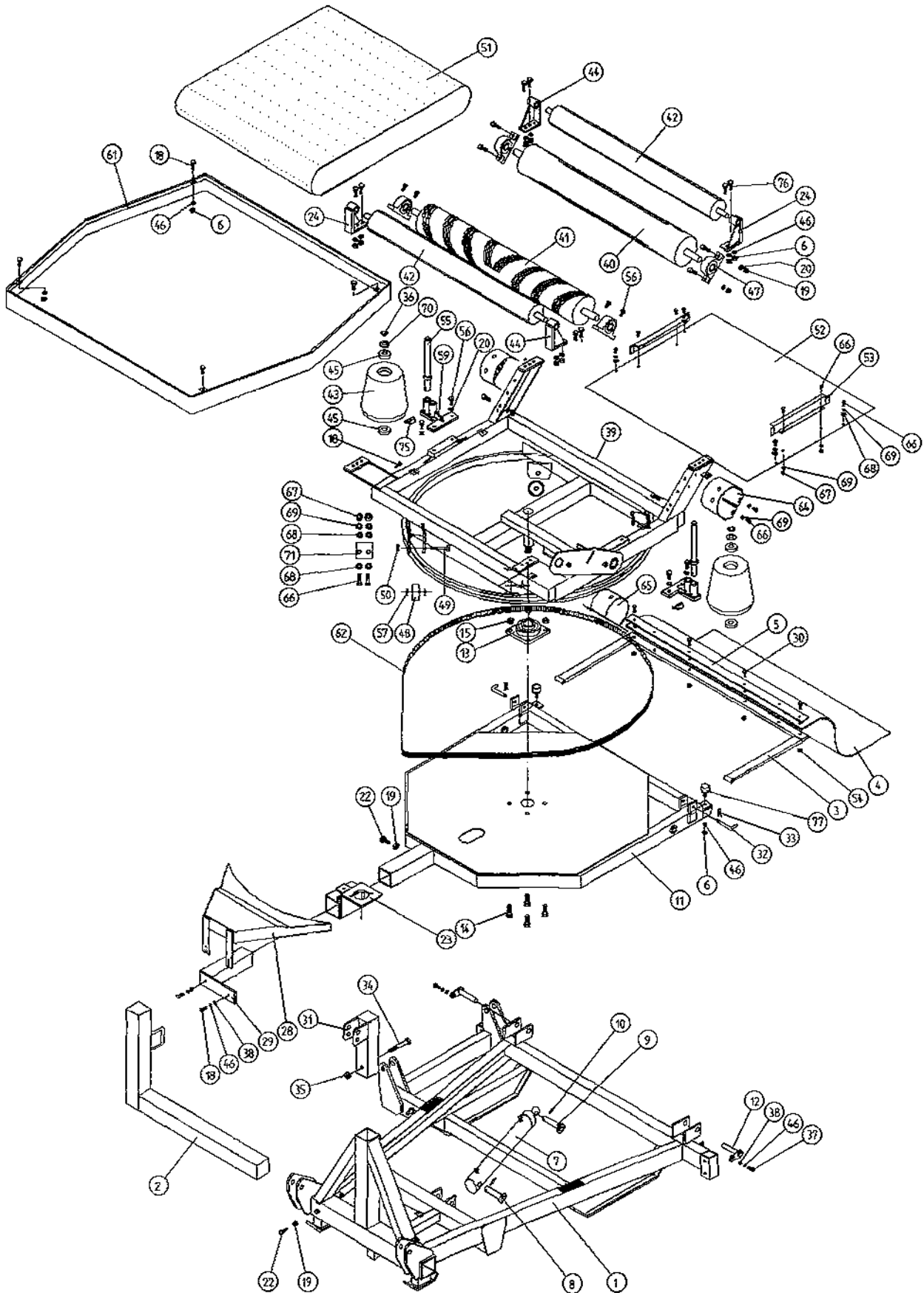
WD63-PL17

TANCO AUTOWRAP 200SL/200AL MODEL (3PT. LINKAGE) 1994

PARTS LIST

ITEM NO.	DESCRIPTION	QTY.	PART-NO.
1.	3PT. LINKAGE FRAME ASSEMBLY	1	WD63-MFSL
2.	DISPENSER BRACKET LOWER SUPPORT	1	WD63-DMLH
3.	RUBBER MAT MOUNTING FRAME ASSEMBLY	1	WD63-MMF
4.	RUBBER MAT	1	Z05-02AWM
5.	CLAMPING PLATE	1	WD63-1300
6.	M10 HEX NUT	18	Z18-10
7.	HYD. RAM	1	Z01-01-AR687
8.	RAM BOTTOM PIVOT PIN	1	Z03-02-330
9.	RAM TOP PIVOT PIN	1	Z03-03-50
10.	2" x 1/4" SPLIT PIN	2	Z03-21-29
11.	TIPPING FRAME ASSY.	1	WD60-TFC
12.	TIPPING FRAME PIVOT C/W GREASE NIPPLE	2	Z03-01-905 Z39-60
13.	2" DIA FLANGE BEARING C/W CAM LOCK COLLAR	1	Z06-49EC
14.	5/8" UNF HEX HD. SET x 2" LONG	4	Z31B-064
15.	5/8" UNF LOCKNUTS	4	Z20-10
18.	M10 HEX HD SET x 30mm LONG	11	Z26-062S
19.	M12 HEX NUT	9	Z18-12
20.	12mm DIA SPRING WASHER	12	Z12-02-12
22.	M12 HEX HD SETS x 30mm LONG	1	Z26-082S
23.	HYD. MOTOR MOUNTING ASSY.	1	WD60-HMB
24.	ROLLER MOUNTING BRACKET	2	WD60-TRMBL
28.	HYD. MOTOR GUARD ASSY.	1	WD60-HMG
29.	HYDRAULIC MOTOR GUARD MOUNTING BRACKET	1	WD60-HAMB
30.	M8 HEX HD BOLT x 50mm LONG	4	Z26-045B
31.	TOP LINK BRACKET ASSEMBLY	1	WD63-TLB
32.	BISSEL PIN	2	Z03-22-AW100
33.	4mm "R" CLIP	2	Z36-02
34.	M16 HEX HD BOLT x 120mm LONG	1	Z26-134B
35.	M16 LOCKNUTS	1	Z23-16
36.	CIRCLIP	2	Z28-525
37.	M10 HEX HD. SET x 25mm LONG (TUFLOCK)	2	Z26-061S
38.	10mm DIA MACHINED FLAT WASHER	4	Z11-02-10
39.	TURN TABLE ASSY.	1	WD60-TAC
40.	BIG ROLLER ASSY IDLER	1	WD65-BRI
41.	BIG ROLLER ASSY. DRIVER	1	WD65-BRD
42.	SMALL ROLLER ASSY.	2	WD60-SMR
43.	SIDE ROLLER	2	Z06-AWR
44.	ROLLER MTG. BRACKET	2	WD60-TRMBR
45.	BEARING (25MM I.D.)	4	Z06-AWR-93
46.	10mm DIA SPRING WASHERS	23	Z12-02-10
47.	11/4" PILLOW BLOCK BEARING C/W CAM COLLAR	4	Z06-485

TANCO AUTOWRAP 200 SL/200 AL MODEL 1994

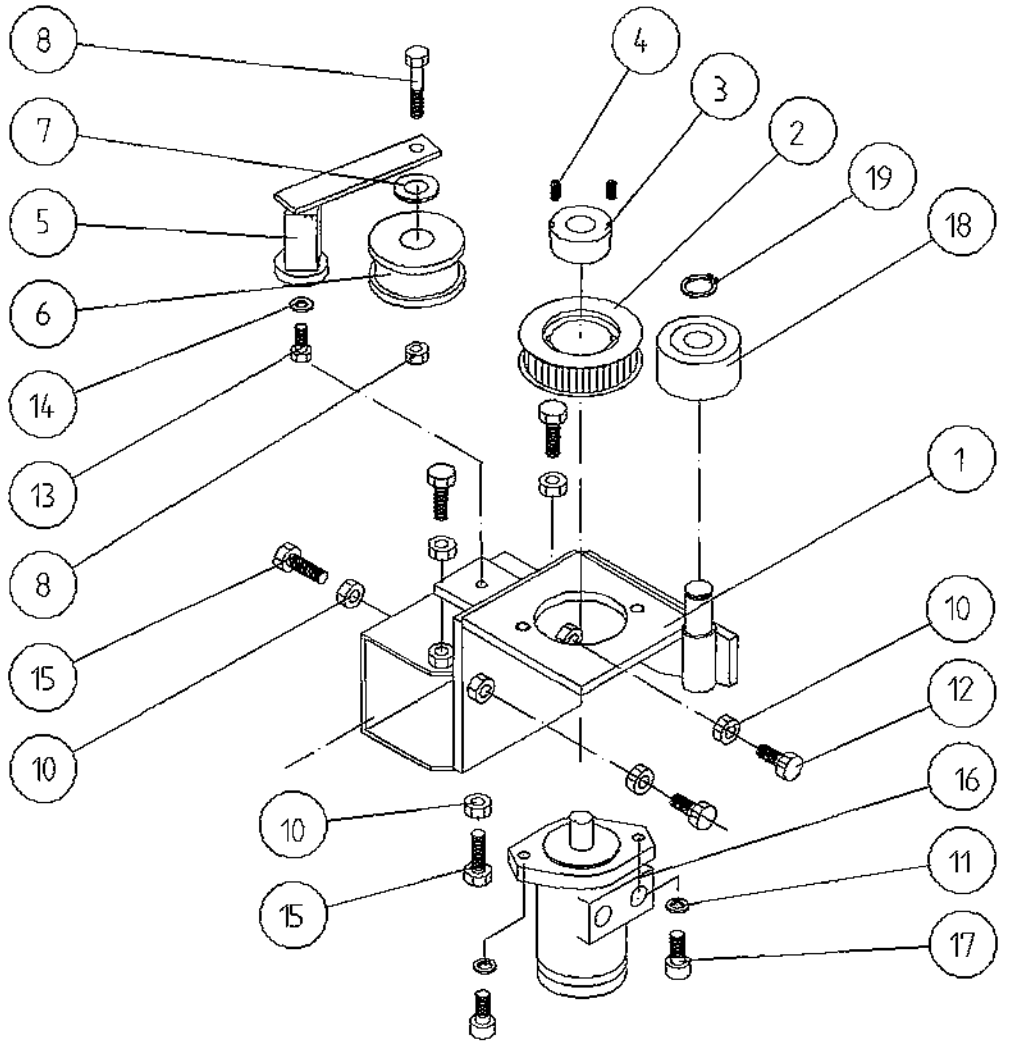


WD63-PL17

TANCO AUTOWRAP 200SL/200AL MODEL (3PT. LINKAGE) 1994
PARTS LIST

48.	SUPPORT WHEELS (4" DIA)	4	Z06-466
49.	AXLE ASSY. C/W GREASE NIPPLE	4	Z03-22-AW/AX Z39-60
50.	M20 LOCKNUTS	4	Z23-20
51.	1 METER WIDE x 89 1/2" LONG X 1/4" FLAT BELT	1	Z05-02AWV
52.	TURN TABLE COVER PLATE	1	WD60-093
53.	BELT GUIDE ASSY.	2	WD625-BG.
54.	M8 LOCKNUTS	4	Z23-08
55.	ROLLER SHAFT ASSEMBLY	2	WD60-RSA
56.	M12 HEX HD. SETS x 40mm LONG	12	Z26-084S
57.	SPACER	8	WD60-198
58.	1/8" B.S.P. ST GREASE NIPPLE	4	Z39-60
59.	END ROLLER MOUNTING BRACKET	2	WD60-ERM
61.	MAIN GUARD ASSY.	1	WD60-MG
62.	170" LONG X 1/2 PITCH X 1" WIDE TOOTHED BELT	1	Z05-02-AW20
64.	GRASS GUARD (CLOSED TYPE)	3	Z49-98
65.	GRASS GUARD (OPEN TYPE)	1	Z49-981
66.	M8 HEX HD SETS x 20mm LONG	20	Z26-039S
67.	M8 HEX NUTS	14	Z18-08
68.	8mm DIA FLAT WASHERS (MUD FLAP)	20	Z11-02-081
69.	8MM DIA SPRING WASHERS	20	Z12-02-08
70.	THRUST WASHER	2	WD60-292
71.	SCRAPER	2	WD60-705
75.	10mm "D" LINCH PIN	2	Z38-03
76.	M10 HEX HD SET x 35mm LONG	8	Z26-063S
77.	BUFFER 56mm DIA x 40mm LONG	2	Z40-20

TANCO AUTOWRAP 1994 MODEL HYDRAULIC MOTOR DRIVE ASSEMBLY



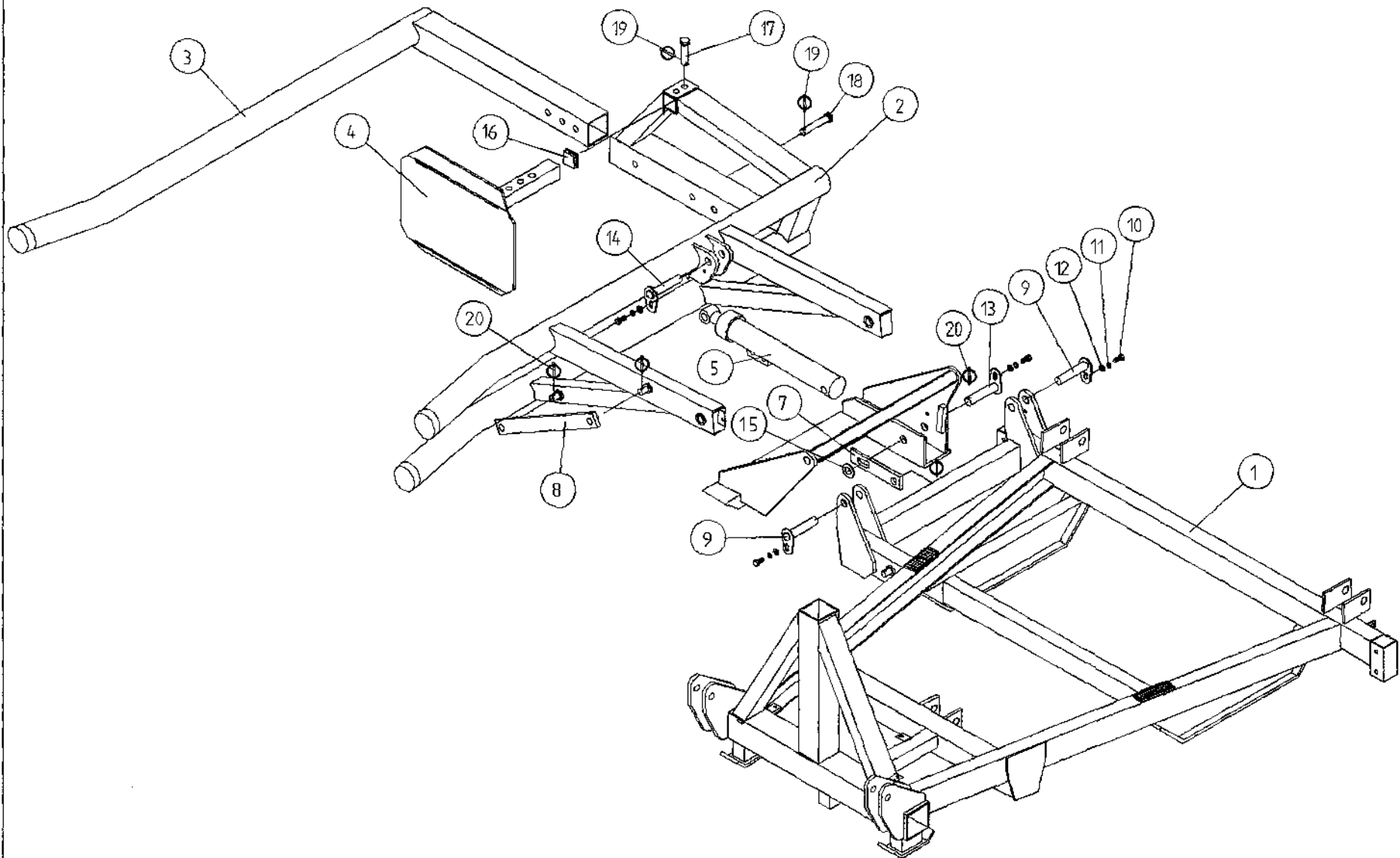
WD60-PL27

TANCO AUTOWRAP 1994 MODEL
HYDRAULIC MOTOR DRIVE ASSEMBLY

PARTS LIST

ITEM NO.	DESCRIPTION	QTY.	PART-NO.
1.	HYDRAULIC MOTOR MOUNTING ASSY.	1	WD65-HMB
2.	4" DIA X 1/2" PITCH TOOTHED PULLY	1	Z09-005-AW1
3.	TAPER LOCK BUSH TO SUIT 1" DIA SHAFT	1	Z09-005-AW2
4.	M10 STUDS X 15MM	2	Z28-01
5.	ROSTA TENSIONING UNIT ARM	1	Z06-454
6.	STEPPED ROLLER C/W BEARINGS	1	Z06-456
7.	SPACER	1	WD60-798
8.	M10 HEX HD BOLT X 60MM LONG	1	Z26-067B
9.	M10 LOCKNUT	1	Z23-10
10.	M12 HEX NUT	6	Z18-12
11.	12MM DIA SPRING WASHER	2	Z12-02-12
12.	M12 HEX HD SET X 30MM LONG	2	Z26-082S
13.	M10 HEX HD SET X 25MM LONG (TUFLOCK)	1	Z26-061S
14.	10MM DIA SPRING WASHER	1	Z12-02-10
15.	M12 HEX HD SET X 40MM LONG	6	Z26-084S
16.	HYDRAULIC MOTOR C.L.	1	Z01-02-AR75
17.	M12 SOCKET HD SCREW X 30MM LONG	2	Z13-6-12X30
18.	ROLLER C/W BEARINGS	1	Z06-457
19.	CIRCLIP	1	Z28-525

TANCO AUTOWRAP 200 SL / 200 AL MODEL
LIFT ARM AND STABILISER ASSEMBLY

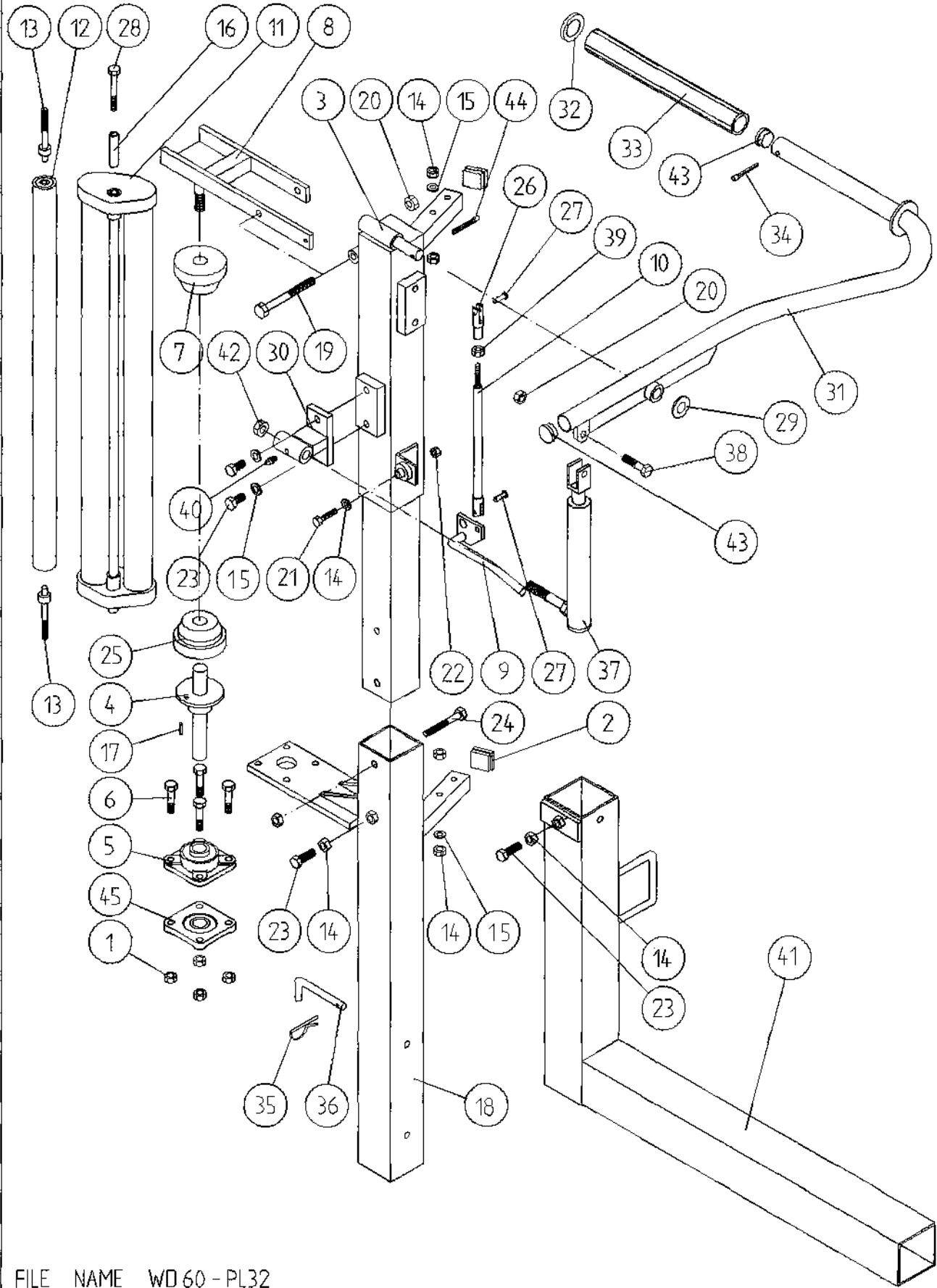


TANCO AUTOWRAP 200SL / 200AL MODELS
LIFT ARM AND STABILISER ASSEMBLY

PARTS LIST

ITEM NO.	DESCRIPTION	QTY.	PART-NO.
1.	3PT LINKAGE MAIN FRAME	1	WD63-MFSL
2.	LIFT ARM ASSY	1	WD63-LA
3.	ADJUSTABLE OUTER ARM ASSY	1	WD63-LAAA
4.	ADJUSTABLE BALE STOP	1	WD610-LAS
5.	HYDRAULIC RAM	1	Z01-01-AW200
6.	STABILISING LEG ASSY	1	WD63-LASL
7.	STAY (SHORT)	1	WD63-1426
8.	STAY (LONG)	1	WD63-1418
9.	LIFT ARM PIVOT PIN C/W GREASE NIPPLE	2	Z03-01-796
10.	M10 HEX HD SET x 25MM LONG (TUFLOCK)	4	Z26-061S
11.	10mm DIA SPRING WASHER	4	Z12-02-10
12.	10mm DIA FLAT WASHER	4	Z11-02-10
13.	RAM BOTTOM PIVOT PIN C/W GREASE NIPPPLE	1	Z03-02-192
14.	RAM TOP PIVOT PIN C/W GREASE NIPPLE	1	Z03-01-797
15.	1" DIA HEAVY DUTY FLAT WASHER	1	Z11-02-25
16.	PLASTIC CAP	1	Z32-10
17.	SPAREX PIN	1	Z03-04-73
18.	SPAREX PIN	1	Z03-04-77
19.	7/16" DIA LINCH PINS	2	Z03-22-06
20.	6mm DIA LINCH PINS	4	Z03-22-03

TANCO AUTOWRAP 200 AL MODEL 1994 FILM DISPENSOR SYSTEM

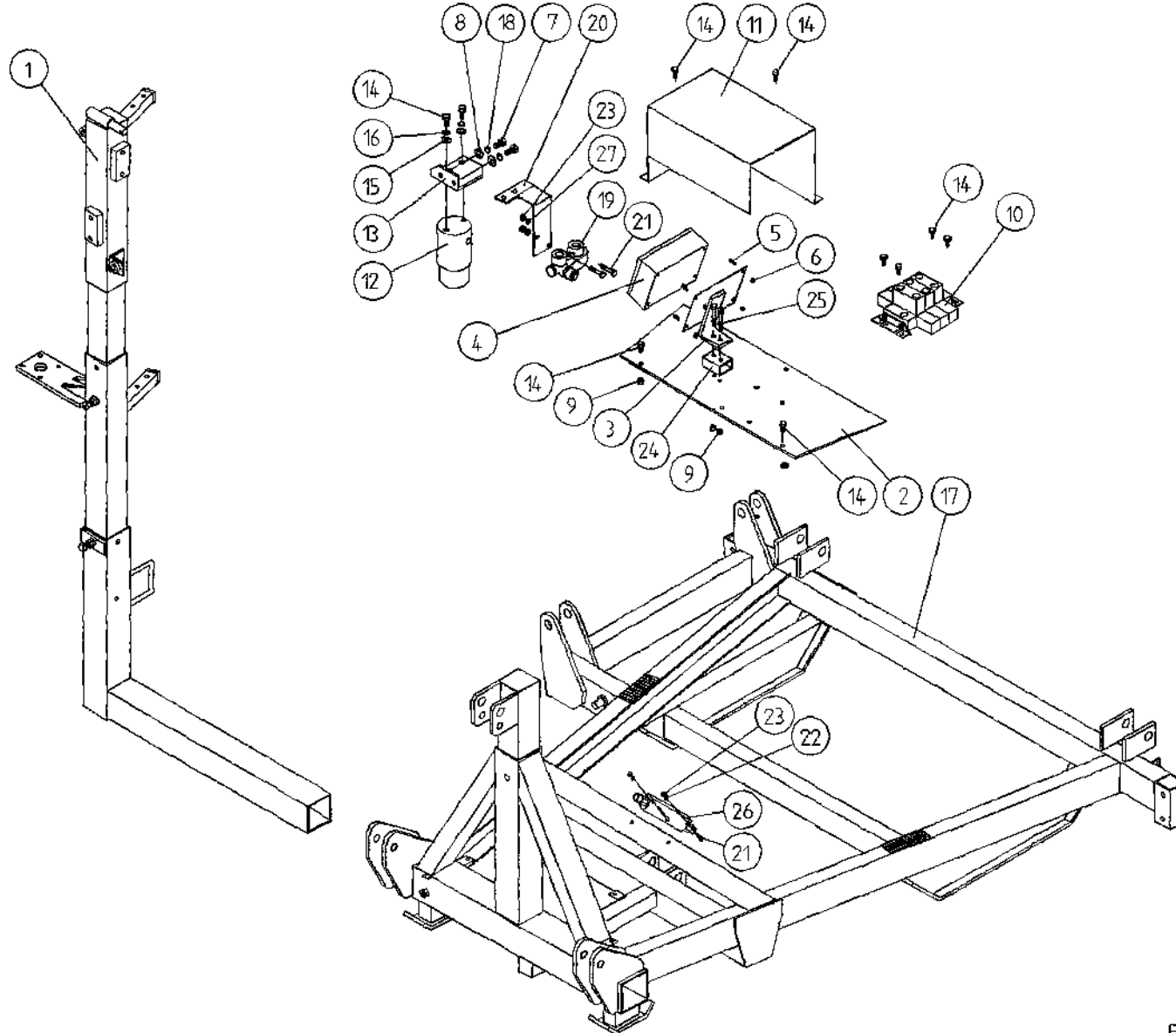


FILE NAME WD 60 - PL32

TANCO AUTOWRAP 200 AL MODEL 1994FILM DISPENSING SYSTEMPARTS LIST

ITEM NO.	DESCRIPTION	QTY.	PART-NO.
1.	M10 LOCKNUTS	4	Z23-10
2.	(PLASTIC CAPS TO SUIT 40 x 40 x 3 x RHS)	2	Z32-07
3.	DISPENSER MOUNTING (UPPER)	1	WD60-DMUH
4.	FILM SPOOL ASSEMBLY	1	WD60-SPO
5.	1" DIA FLANGE BEARING C/W CAM LOCK	1	Z06-48EC
6.	M10 HEX HD BOLT X 50mm LONG	4	Z26-066B
7.	CONE (TOP) C/W BALL BEARINGS	1	Z06-45-01
8.	CLAMP ASSEMBLY	1	WD60-DMCA
9.	LEVER ASSEMBLY	1	WD60-DMLA
10.	LINK ASSEMBLY	1	WD60-DMLK
11.	FILM DISPENSER UNIT MK 6 (70% STRETCH)	1	D615
12.	SLAVE ROLLER ASSY (PLASTIC COATED)	1	WD65-SLR
13.	SLAVE ROLLER PIVOT	2	WD60-SRS
14.	M12 HEX NUTS	7	Z18-12
15.	12mm DIA SPRING WASHER	2	Z12-02-12
16.	SLEEVE	1	D615-F
17.	1/4" DIA TENSION PIN x 3/4" LONG	1	Z03-20-062
18.	DISPENSER MOUNTING (LOWER)	1	WD60-DMLH
19.	M12 HEX HD BOLT x 130mm LONG	1	Z26-094B
20.	M12 LOCKNUT	3	Z23-12
21.	M8 HEX HD BOLT x 35mm LONG	1	Z26-042S
22.	M8 LOCKNUT	1	Z23-08
23.	M12 HEX HD SET x 30mm LONG	3	Z26-082S
24.	M12 HEX HD BOLT x 100mm LONG	1	Z26-092B
25.	CONE (BOTTOM)	1	Z06-45-02
26.	CLEVIS (M10)	1	Z29-335
27.	PIN (5/16" DIA) C/W CLIP	2	Z49-337
28.	M10 HEX HD BOLT x 80mm LONG	1	Z26-0691B
29.	3/4" DIA FLAT WASHER	1	Z10-02-19
30.	FILM PULL DOWN BRACKET ASSY	1	WD65-FPDB
31.	FILM PULL DOWN ARM ASSY	1	WD65-FPDA
32.	RETAINING WASHER	1	WD60-859
33.	ROLLER	1	WD60-866
34.	2" x 1/4" SPLIT PIN	1	Z01-23-29
35.	4mm "R" CLIP	1	Z36-02
36.	BISSEL PIN (110mm LONG)	1	WD60-861
37.	HYDRAULIC RAM	1	Z01-01-AW25
38.	M12 HEX HD SET x 50mm LONG	1	Z26-086S
39.	5/16" UNF HEX NUT	1	Z15-05
40.	1/8" BSP ST GREASE NIPPLE	1	Z39-60
41.	DISPENSER BRACKET LOWER SUPPORT	1	WD63-DMLH
42.	M16 LOCKNUT	1	Z23-16
43.	1" GB PLASTIC CAP	2	Z32-14
44.	1/2" x 3/16" SPLIT PIN	1	Z03-20-05
45.	1" DIA FLANGE BEARING	1	Z06-48

TANCO AUTOWRAP 200 AL MODEL
SOLENOID VALVE & JUNCTION BOX ASSY



WD63-PL20

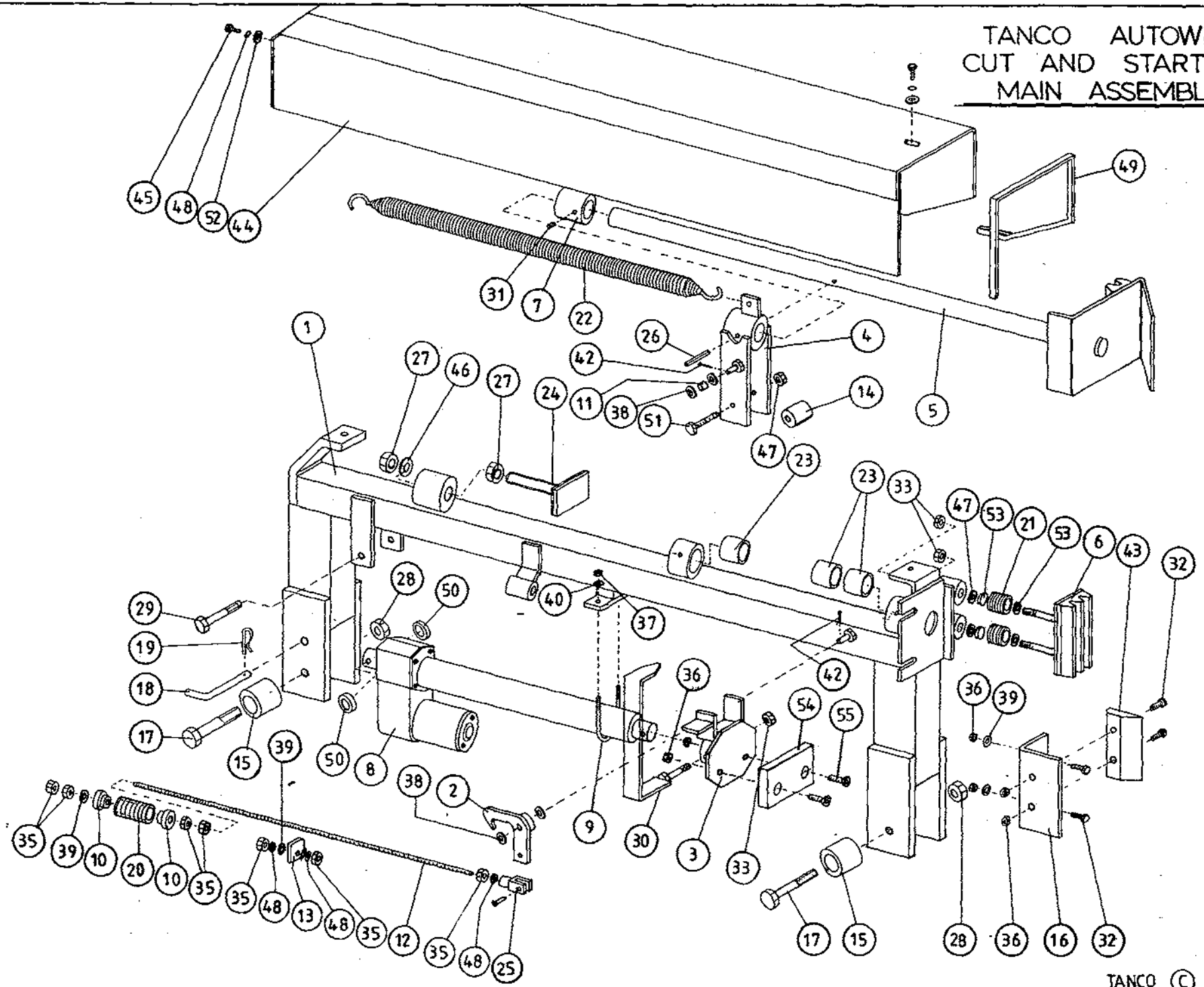
TANCO AUTOWRAP 200 AL MODEL

SOLENOID VALVE & JUNCTION BOX ASSY
PARTS LIST

ITEM NO	DESCRIPTION	QTY.	PART-NO.
1.	FILM MAST ASSY	1	
2.	SOLENOID VALVE MOUNTING PLATE	1	WD63-1027
3.	JUNCTION BOX MOUNTING BRACKET	1	WD63-IBM
4.	JUNCTION BOX	1	ZDG-JB3
5.	M4 ALLEN HD SOCKET SCREW X 16MM	4	Z26-002
6.	M4 LOCKNUT	4	Z23-04
7.	M10 HEX HD SET X 25MM	2	Z26-0611S
8.	10MM DIA FLAT WASHER	2	Z10-02-10
9.	M8 LOCKNUT	10	Z23-08
10.	3 BANK SOLENOID VALVE	1	Z01-03-10-A3
11.	VALVE & JUNCTION BOX COVER	1	WD63-UC
12.	FILTER	1	Z01-24-08
13.	FILTER MOUNTING BRACKET	1	WD63-1053
14.	M8 HEX HD SET X 15MM	8	Z26-038S
15.	8MM DIA FLAT WASHER	2	Z10-02-08
16.	8MM DIA FLAT SPRING WASHER	2	Z12-02-08
17.	3PT LINKAGE FRAME	1	WD625-MF
18.	10MM DIA SPRING WASHER	2	Z12-02-10
19.	FLOW DIVIDER	1	Z01-03-10-A6
20.	FLOW DIVIDER MOUNTING BRACKET	1	WD65-FDM
21.	M6 ALLEN HD. SOCKET SCREW x 50mm LONG	4	Z13-020-50
22.	6MM DIA FLAT WASHER	2	Z10-02-06
23.	M6 LOCKNUT (NYLOCK)	4	Z23-06
24.	PACKER	1	WD612-034
25.	M8 HEX HD BOLT X 65MM LONG	2	Z26-048B
26.	OVER CENTRE VALVE	1	Z01-03-10-A8
27.	6 mm DIA MUD FLAP WASHER	2	Z11-02-061

TANCO AUTOWRAP
 CUT AND START UNIT (1994)
 MAIN ASSEMBLY

37

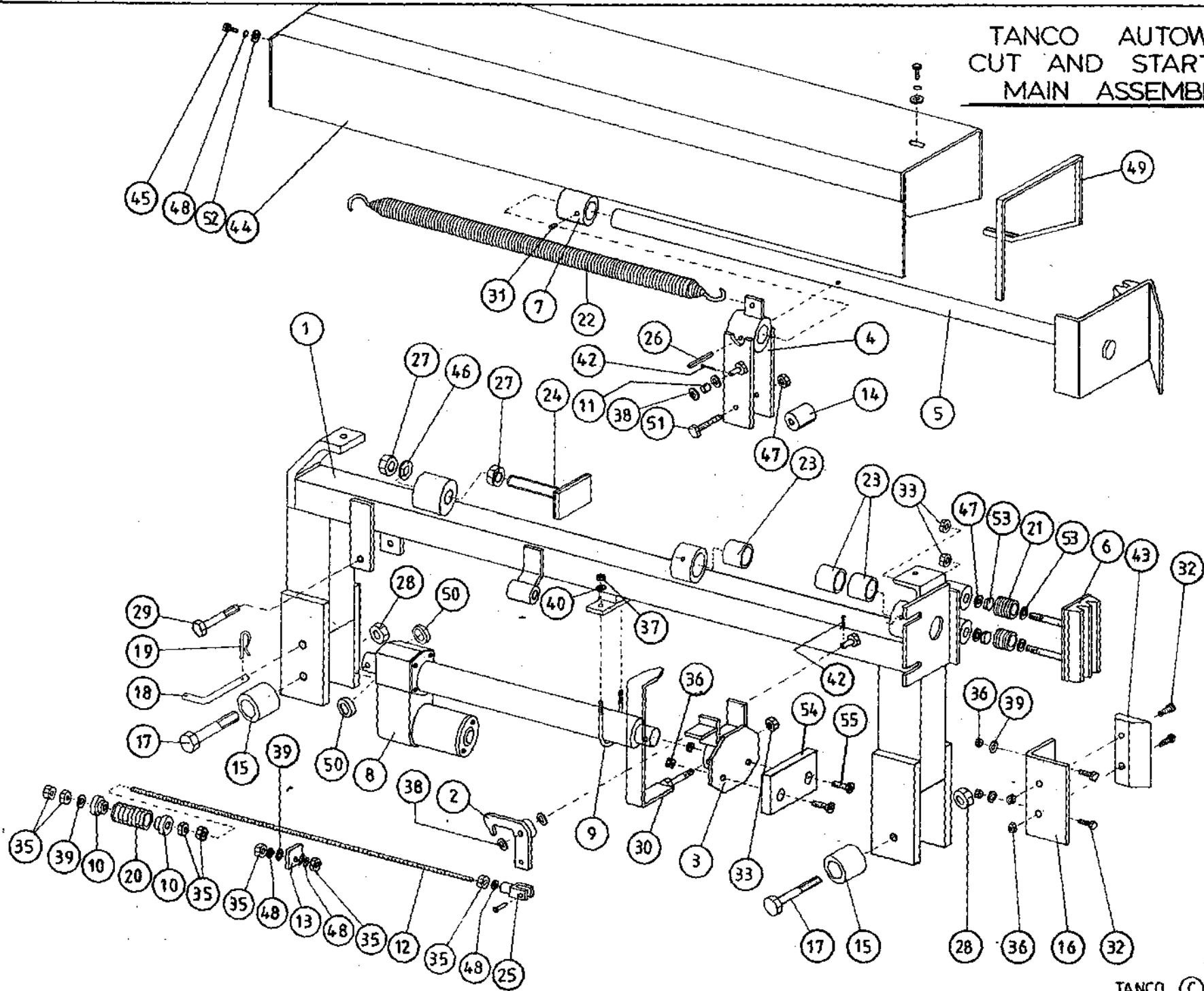


AUTOWRAP

**TANCO AUTOWRAP
CUT AND START UNIT (1994)
PARTS LIST**

ITEM NO	DESCRIPTION	QTY	PART-NO.
1.	MAIN MOUNTING FRAME ASSY	1	WD605-MF
2.	LATCH ASSY.	1	WD605-LA
3.	PUSH PLATE ASSY.	1	WD605-PP
4.	GUIDE ASSY	1	WD605-GD
5.	PLUNGER ASSY	1	WD605-PL
6.	FILM GRIPPER ASSY	1	WD605-FG
7.	PLUNGER END CAP	1	WD605-90
8.	WARNER LINEAR ACTUATOR D11 10B5 08	1	ZD605-510
9.	"U" BOLT	1	WD605-45
10.	STEPPED COLLAR	2	WD605-46
11.	SLEEVE 1/2" DIA O.D. X 13/32" DIA I.D.	1	WD605-47
12.	THREADED ROUND 5/16" UNF	1	WD605-48
13.	TRIGGER	1	WD605-50
14.	COLLAR 1" DIA BRIGHT RD. X 41.5MM LONG	1	WD605-51
15.	SPACER	1	WD605-100
16.	BLADE GUARD/MOUNTING BRACKET	1	WD605-105
17.	M12 HEX HD BOLT X 80MM LONG	2	Z26-0901B
18.	BISSEL PIN	1	Z03-22-AW100
19.	4MM "R" CLIP	1	Z36-02
20.	SPRING 16MM O.D. X 1.5MM WIRE X 48MM LONG	1	Z07-34
21.	SPRING 1.09" O.D. X 0.092" WIRE X 1.54" LONG	2	Z07-44
22.	SPRING 1.125 O.D. X 0.125" WIRE X 330MM	1	Z07-46
23.	OILITE OIL RETAINING BUSH 1 1/8" O.D. X 3/4" X 1" L.	3	Z06-105
24.	RUBBER BUFFER ASSY.	1	WD605-BA
25.	CLEVIS C/W PIN	1	Z49-33
26.	1 1/2" X 1/4" DIA TENSION PIN	1	Z03-20-07
27.	M16 HEX NUTS	2	Z18-16
28.	M12 LOCKNUTS	2	Z23-12
29.	M12 HEX HD BOLT X 65MM	1	Z26-0882B
30.	INDICATOR ASSY	1	WD605-PR
31.	M8 GRUB SCREW	1	Z28-008
32.	M8 HEX HD SET X 25MM	4	Z26-040S
33.	M12 BINX LOCKNUT	4	Z23-12BX
35.	5/16" UNF HEX NUT	7	Z15-05
36.	M8 LOCKNUT	9	Z18-08
37.	M6 LOCKNUT (NYLOCK)	2	Z23-06
38.	10MM DIA FLAT WASHER	10	Z11-02-10
39.	8MM DIA FLAT WASHER	5	Z11-02-08
40.	6MM DIA FLAT WASHER	2	Z11-02-06
42.	3MM DIA SPLIT PIN	2	Z03-21-02
43.	BLADE	1	WD605-104
44.	MAIN GUARD	1	WD605-MG
45.	M8 HEX HD SET X 20MM LONG	2	Z26-039S
46.	10MM DIA SPRING WASHER	2	Z12-02-10
47.	12MM DIA FLAT WASHER	2	Z11-02-12
48.	8M DIA SPRING WASHER	9	Z12-02-08
49.	EDGING STRIP	1	Z44-12
50.	SPACER 1" O.D. X 1/2" I.D. X 6MM LONG	2	WD605-65

TANCO AUTOWRAP
CUT AND START UNIT (1994)
MAIN ASSEMBLY

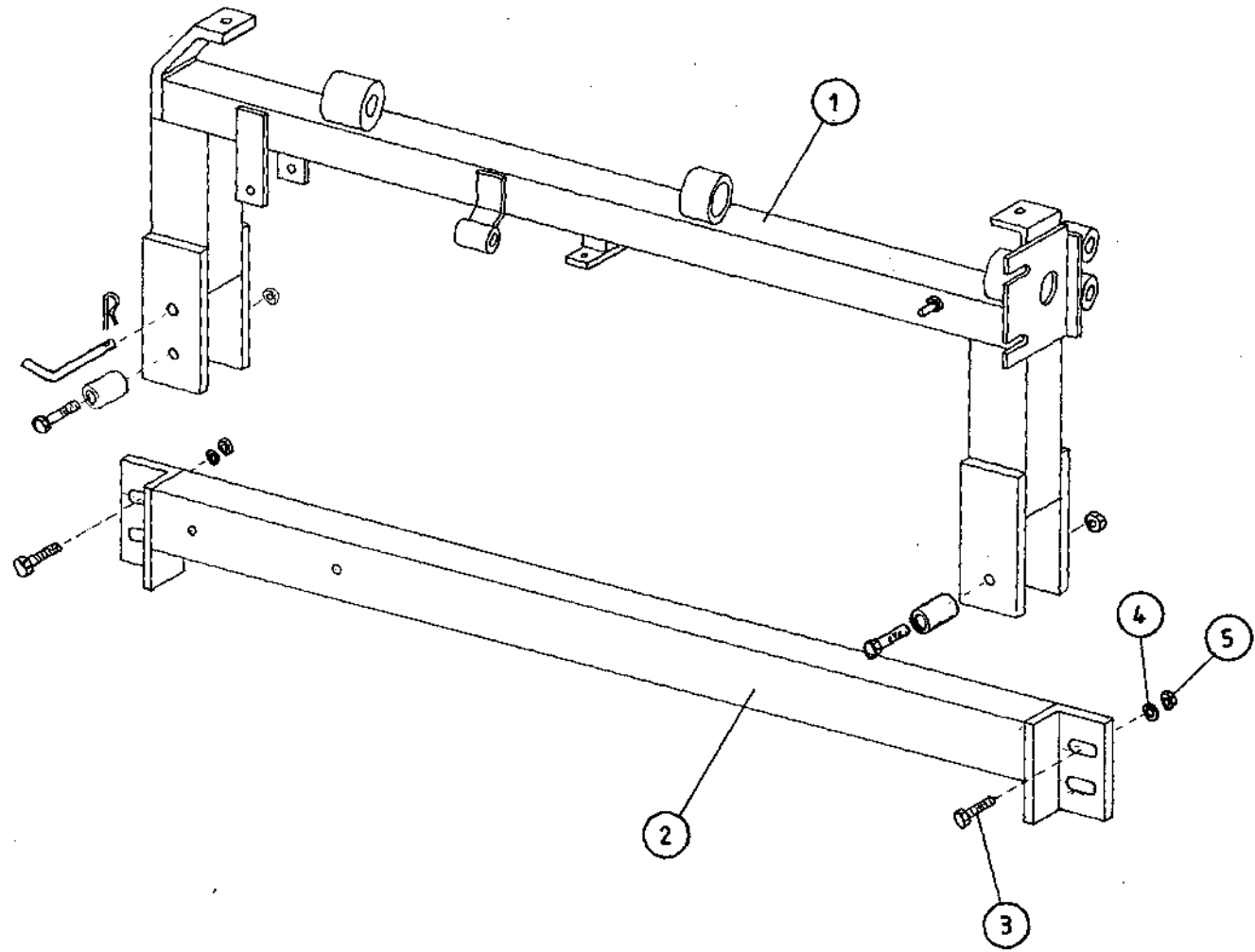


AUTOWRAP

**TANCO AUTOWRAP
CUT AND START UNIT (199)
PARTS LIST**

ITEM NO	DESCRIPTION	QTY	PART-NO.
51.	M10 HEX HDSET X 20MM	2	Z26-060S
52.	8MM DIA FLAT WASHER 1" O.D.	4	Z11-02-081
53.	25MM O.D. X 12MM I.D. FILM GRIP WASHER	4	Z11-02-12FG
54.	PACKER	1	WD605-133
55.	H8 X 40 COUNTER SUNK BOLT	2	Z13-5-08X40

TANCO AUTOWRAP CUT AND START (1994)
MOUNTING FRAME



WD605-MF

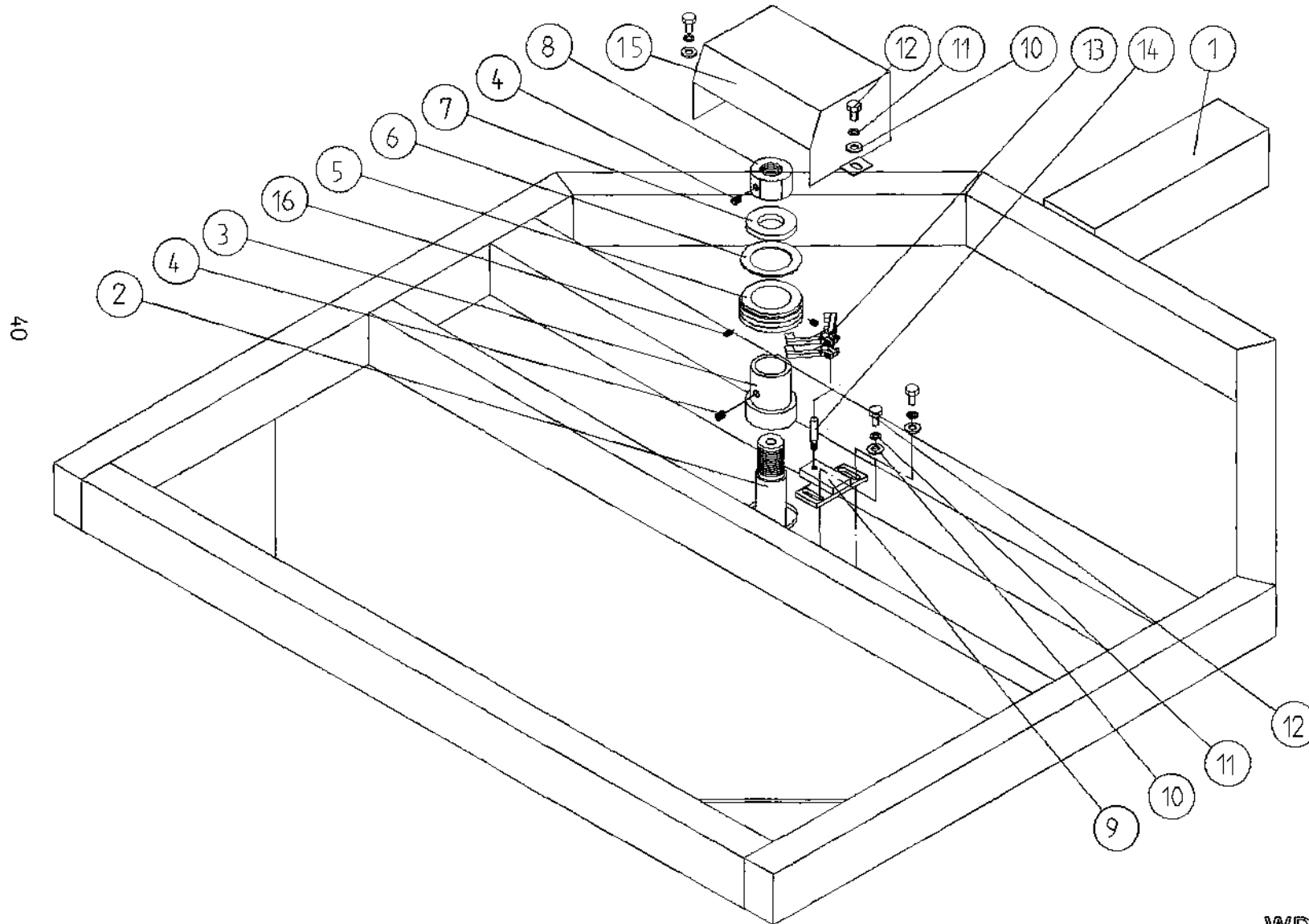
TANCO AUTOWRAP CUT AND START UNIT (1994)

MOUNTING FRAME

PARTS LIST

ITEM NO	DESCRIPTION	QTY	PART-NO
1.	MAIN MOUNTING FRAME ASSY	1	WD605-MF
2.	MAIN FRAME MOUNTING	1	WD605-MFM
3.	M10 HEX HD SET x 30mm LONG	2	Z26-062S
4.	10mm DIA SPRING WASHER	2	Z12-02-10
5.	M10 HEX NUT	2	Z18-10

TANCO AUTOWRAP - CUT AND START UNIT (1994)
SLIP RING ASSEMBLY



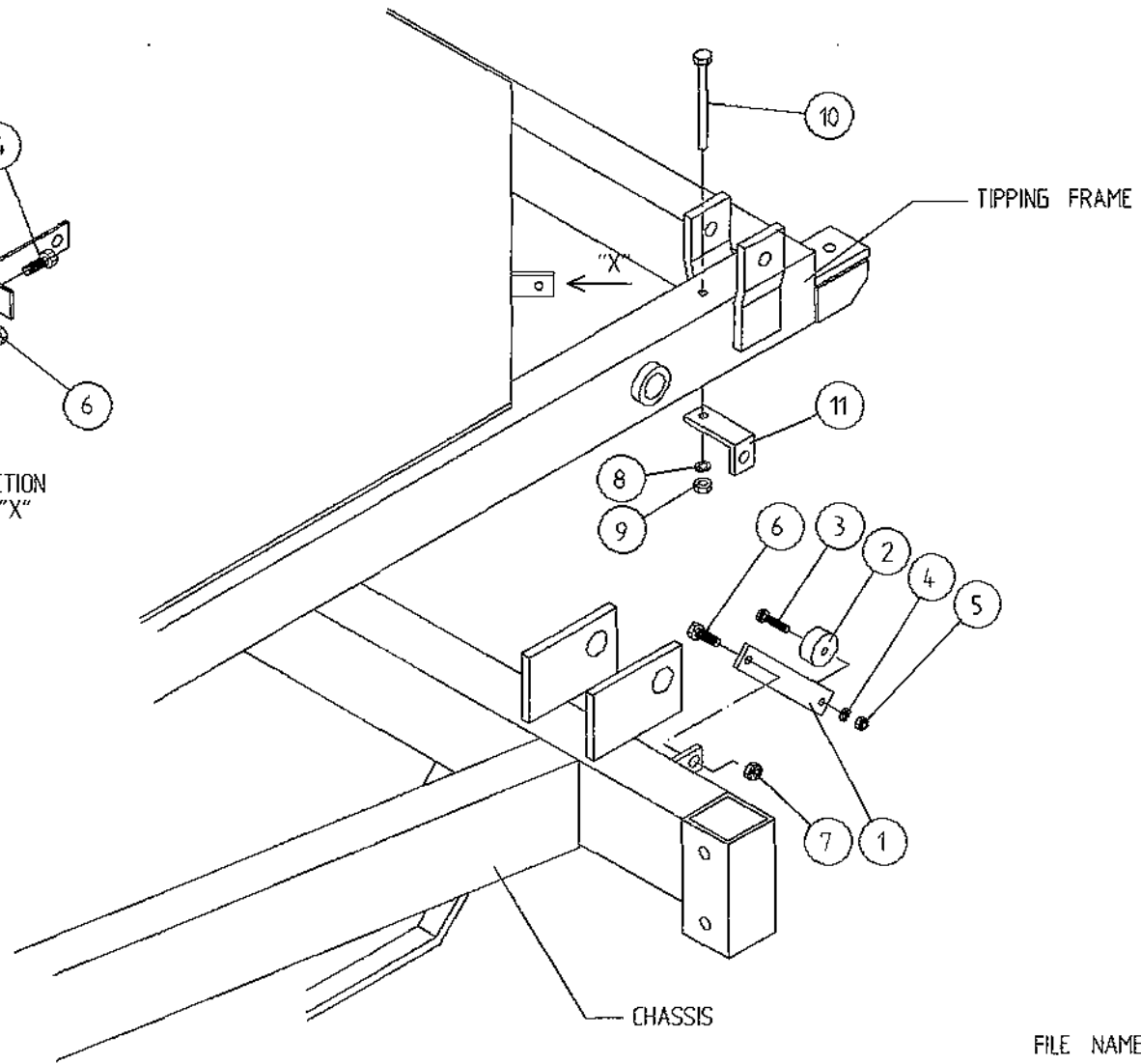
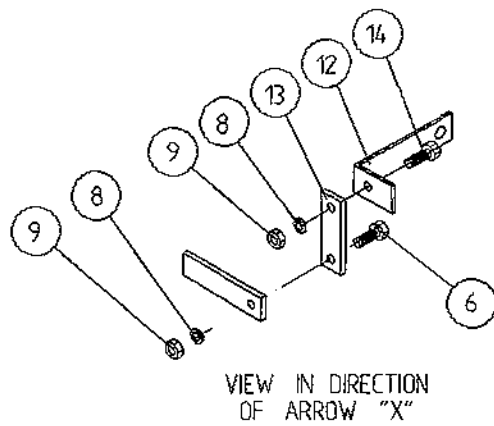
40

**TANCO AUTOWRAP CUT AND START UNIT (1994)
SLIP RING ASSY.**

PARTS LIST

<u>ITEM NO.</u>	<u>DESCRIPTION</u>	<u>QTY.</u>	<u>PART-NO.</u>
1.	UNDERSIDE OF TIPPING FRAME	1	
2.	TURNTABLE CENTRE SHAFT	1	WD60-768
3.	SLIP RING MOUNTING SLEEVE	1	WD60-825
4.	M8 GRUB SCREW x 6 mm LONG	2	Z28-007
5.	SLIP RING ASSY.	1	ZD605-308
6.	INSULATING RING	1	ZD605-350
7.	LOCKING COLLAR	1	WD60-770
8.	1 1/4" UNC HEX NUT	1	Z18-300
9.	SLIP RING MOUNTING BRACKET ASSY	1	WD605-SRMB
10.	10mm DIA FLAT WASHER 1" O.D.	4	Z11-02-101
11.	10mm SPRING WASHER	4	Z12-02-10
12.	M10 HEX HD SET x 20mm	4	Z26-060S
13.	BRUSHES	2	ZD605-306
14.	INSULATOR SLEEVE	1	ZD605-302
15.	SLIP RING GUARD ASSY	1	WD605-SRG
16.	M5 GRUB SCREW	2	Z28-005

TANCO AUTOWRAP
CUT AND START UNIT
SENSOR & MAGNET MOUNTING BRACKETS



FILE NAME WD605-PL5

TANCO AUTOWRAP CUT AND START UNIT 1994SENSOR AND MAGNET MOUNTING BRACKETSPARTS LIST

ITEM NO.	DESCRIPTION	QTY.	PART-NO.
1.	MAGNET MOUNTING BRACKET	1	WD605-57
2.	MAGNET	1	D6043
3.	M6 HEX HD SET x 30mm LONG	1	Z26-022S
4.	6mm DIA FLAT WASHER	1	Z11-02-06
5.	M6 LOCKNUT	1	Z23-06
6.	M8 HEX HD SET x 25mm LONG	2	Z26-040S
7.	M8 LOCKNUT (NYLOCK)	1	Z23-08
8.	8mm DIA SPRING WASHER	3	Z12-02-08
9.	M8 HEX NUT	3	Z18-08
10.	M8 HEX HD SET x 100mm LONG	1	Z26-057S
11.	SENSOR MOUNTING BRACKET	1	WD605-58
12.	ROTATE SENSOR MOUNTING BRACKET	1	WD605-140
13.	MOUNTING FLAT	1	WD605-07
14.	M8 HEX HD SET x 20mm LONG	1	Z26-020S

FAULT FINDING

PROBLEMS.

- | | |
|---|--|
| 1. Drive Belt Slipping on Drive. | Tension belt with Automatic tension set to 25 - 30 degrees - see page 8. Check belt is correct pitch if it has been replaced. |
| 2. Drive belt breaking and bottom or Top Rim coming off motor sprocket. | Check that cross line relief valve is working on motor. Check motor mount for alignment. Reduce tension on Drive Belt. Check there is no vertical movement of turntable spindle - if so tighten bearing locking screws on spindle and ensure that collar is secure on spindle below bearing. |
| 3. Film Breaking | Wash off dispenser and slave rollers Change roll of film. Use recommended films only. |
| 4. Film not wrapping evenly on bale. | Adjust film mast so centre of film roll is aligned with centre of bale . |
| 5. Film Tearing on Ramp. | Check for sharp edges and remove. |
| 6. Bale Skidding on Ramp. | Fit Hessian Bag or piece of carpet to Ramp. |
| 7. Film Dispenser not Pre-Stretching Film. | Check that both Rollers turn when one is turned by hand. If not, fit new gears or replace unit. |
| 8. Tyres coming off 4" platform Support Wheels. | Replace Wheels - Reduce speed below 25 r.p.m. - <u>Do not oil</u> or grease path of wheels on platform. |

FAULT FINDING

PROBLEMS

9. MAIN BELT MOVING SIDEWAYS

- (i) Ensure vertical rollers (plastic) are tight on the bale. Remember that the bale will reduce in size during wrapping and, on the round bales in particular, the corners will become rounded so that the bale will tend to move sideways due to centrifugal forces. Now, if the plastic rollers are too far apart, the bale will move against one of the plastic rollers whilst the belt will move in the opposite direction - so adjust the vertical plastic rollers so that they keep the bale central on the belt.
- (ii) Adjust bale stop on lift arm so that bale is loaded centrally onto platform.
- (iii) Check that both 6' rollers underneath the bale belt are running parallel to each other. Remember the golden rule - a belt will always move up a slope, so if the rollers are not parallel to each other then the belt will move to the widest setting.

NOTE:

It is important to adjust the idler roller only, as movement of the drive roller will entail adjusting the chain tension also. It is important to note if the belt moves to the same side all of the time, or if it moves first to the gearbox side and then to the other side. With the round bale wrapper, the belt will tend to move to the same side each time because the bale is always loaded the same way.

- (iv) Check that belt is the same measurement each side by running a string around the belt and measuring it. If one side is longer than the other replace the belt but if both sides are same measurement and all above adjustments fail, the try removing the belt and fitting it round the opposite way.

TANCO AUTOWRAP

Cut and start Fault Finding Summary.

This summary is to be read in conjunction with operators handbook.

Note: It has been found that most faults can be attributed to a bad power supply. Therefore it is essential that power supply be taken directly from battery terminals, ensuring correct polarity. Operating voltage is 10V D.C. (under load) to 13.5V D.C.

Problem

Proposed Remedy

- | | |
|--|--|
| (1) Bale Wrap monitor does not power on. | (a) Check polarity on connections to battery terminals.

(b) Check fuse, in bale wrap controller. |
| (2) Plunger does not come out after 2 revolutions of turntable. | (a) Ensure that left hand top switch is in auto mode.

(b) Check operation in manual mode to ensure that plunger travels in and out. If the plunger does not travel in and out, check all connections from six pin plug, through slip ring to linear actuator. |
| (2)(i) Buzzer sound continuously "bleep", "bleep" and bale wrap monitor does not count above 2 revs. | (c) check voltage while operating in manual mode. This voltage should be no lower than 10V D.C. (under load). Also check connections on battery terminals.

(d) Check that bale wrap monitor is counting revolutions and if not check that turntable sensor is within 6mm of magnet on turntable.

(e) Carry out continuity check on turntable sensor, by taking reading cross pins 2 & 3 in six pin plug. |

TANCO AUTOWRAP

Cut and Start
Fault Finding Summary.

- | | |
|--|--|
| (3) Plunger opens too soon and releases film. | (a) Check setting for function (1), which indicates number of turns to activate motor. This should be 2. |
| | (b) Check setting for function (7), which indicates non auto reset. This should be N. |
| (4) Plunger travels out but latch does not engage so plunger travels back in. | (a) Increase setting for function (2) which indicates the number of seconds linear actuator powers out for. Setting can be changed in increments of 0.5 sec. |
| (5) Plunger snaps closed after about 6 turntable revolutions. This is caused by the Linear Actuator not stopping in park position. | (a) Reduce setting for function (4), which indicates the number of seconds required to reverse to park position. Setting can be altered in increments of 0.5 sec. In the park position there should be 5mm to 12mm clearance between cam on push plate assy and latch trigger. |
| (6) Plunger opens while turntable rotates after buzzer sounds. | (a) Check setting for function (7) which indicates non auto reset. This should be N. |
| (7) When machine is tipped plunger does not close. | (a) Check clearance between tip sensor on back of tipping frame and magnet on 5mm to 6mm. |
| | (b) Check that tip sensor passes magnet, if not adjust magnet position. |

TANCO AUTOWRAP

Cut and Start
Fault Finding Summary

(7) (Continued)

- (c) Check that latch trigger is activated by cam on push plate assy. If not adjust trigger.
- (d) Check setting for function (5) which indicates the number of seconds from tipping signal until motor is fully closed. This should be 1.5 sec.

NOTES

Lined area for writing notes, consisting of multiple horizontal lines.

